

RADON FANS  RADON TESTING DEVICES  DIAGNOSTIC AIDS
RADON SYSTEM ACCESSORIES  CRAWLSPACE ENCAPSULATION  RADON IN WATER

Products you can trust,
quality

you can count on.



SERVICE



QUALITY



INNOVATION

RadonAway[®]
The world's leading radon fan manufacturer

2015/2016 PRODUCT CATALOG
800-767-3703 RadonAway.com

Prices effective May 1, 2015

RADONAWAY® QUALITY

OUR COMMITMENT

The RadonAway® brand was created to meet the needs of the radon mitigation industry for reliable mitigation supplies and rapid, courteous service. For over 25 years we have been committed to providing the highest quality radon mitigation products and services. We continue to expand our product lines to meet your needs. All of the products we manufacture, including radon fans, blowers, radon diagnostic and testing devices, and the AIRraider™ and CLEARADON® 3311 systems for radon in water are made in the USA.*



*All RadonAway® radon fans, AIRraider™ and CLEARADON® models, AccuStar® products, and Spruce™ fans are made in USA with US and imported parts. The flag symbol confirms our commitment to providing the best products at a reasonable cost.

OUR PRIORITIES

- Our main priority is our customers. Our fans are the best in the industry, and we stand behind them with our 5-year fan warranty.
- We take customer service seriously. When you have a question, give us a call - you'll talk directly to a person in our U.S. offices who will listen to your needs and assist you in any way possible.
- We innovate. Our engineers create new products specific to the needs of our customers, and we use your feedback to help us make our products as good as they can be.
- We provide radon certification and continuing education training courses to support your ability to reach your business goals.

OUR PARTNERSHIPS

At RadonAway®, we're not just the manufacturers of the leading products in the radon industry. We value our relationships with radon professionals, organizations, and companies, working together to advance the industry and provide a healthier indoor environment.



As a Gold Level supporter, RadonAway® supports CanSAR, a non-profit organization that puts a face on Radon, giving a voice to and empowering people with an apparent radon-induced lung cancer (and their families). CanSAR also helps shape public policy by educating lawmakers and government agencies on the real danger of radon gas and encouraging them to treat radon issues and lung cancer with the seriousness they deserve. Learn more, or become a supporter at CanSAR.org



As a member for more than 20 years, RadonAway® supports AARST, an organization of professionals who are dedicated to the highest standard of excellence and ethical performance of radon measurement, radon mitigation and the transfer of radon information for the benefit of members, consumers and the public at large. Learn more, or become a member at AARST.org



CARST.ca



radoneurope.org



radonassociation.co.uk



basementhealth.org



nahb.org



ngwa.org



hvi.org



energystar.gov

TABLE OF CONTENTS

>> Radon Fans		>> Pipe Accessories	37
RadonAway® SF180.....	4	>> Radon System Accessories	40
RadonAway® RP Series.....	6	>> Pull-Out Fan Guide	33
RadonAway® XP/XR Series.....	8	>> Tools	44
RadonAway® GP Series.....	10	>> Radon in Water Removal	46
RadonAway® GP 500.....	12	>> IAQ / Ventilation	53
RadonAway® High Suction Series.....	13	>> Business Tools & Training	61
Fantech HP/FR Fans.....	14	>> Professional Resources	64
>> Key System & RRNC Components		>> Index	65
Easy Read Manometer.....	15	>> Conditions of Sale	66
Radon-T.....	17	>> E-Commerce	67
VAPORMAT™.....	17		
>> Radon Testing & Diagnostics	18		
GM 1-2 & Corentium.....	21		
>> Basement Sealing	22		
>> Sump Pumps & Accessories	24		
>> Crawlspace Encapsulation	27		

SHOP@RADONAWAY.COM

Shop NOW on our website.

- Shop 24-7
- View invoices and order history

See page 67 for more details.

- Track UPS shipments
- Easy One-Click Re-Order

NEW PRODUCTS



RADONAWAY® AIR FLOW ALARM P. 42

Advanced technology in a compact design, RadonAway's Air Flow Alarm alerts users via sound and light to a low air flow condition in system piping.



CORENTIUM DIGITAL RADON MONITOR P. 21

A handheld, battery-operated, state-of-the-art digital radon monitor, the Corentium is ideal for use by professionals as a radon diagnostic aid.



VAPORMAT™ RADON & MOISTURE CHANNELING SYSTEMS P. 27 & 28

VAPORMAT™ Channeling Systems: Not another vapor barrier, VAPORMAT™ provides increased air flow and can replace perforated pipe and gravel in new construction and crawlspace ASD radon, moisture and VOC systems.



HANGERLOK® PIPE HANGER/CLAMP P. 37

HangerLok®: Exclusively designed to our specifications and available to the radon industry only from RadonAway®, these easy-to-use, corrosion-resistant, UV stable, white, one-piece, automatic-locking pipe hangers match white PVC Schedule 40 system pipe.



RADON IN WATER SYSTEM P. 47

CLEARADON® 3311: Now owned and manufactured by RadonAway®, the Clearadon adds a new aeration process and dimension to our existing line of industry-leading AIRRaider™ aeration systems.

COMING SOON P. 39

Noise-reducing, Anti-vibration Products: Incorporate these new products into your system installation for additional protection against system noise caused by vibration.

SF180 SERIES BY RADONAWAY®



Photo courtesy of Radiation Data

FEATURES

An attractive, low-profile fan with built-in moisture management.

- Stay-white (non-yellowing) exterior
- Built-in moisture/condensate management
- Seams sealed under negative pressure to inhibit radon leakage
- Interchangeable with other fan models
- Mountable on 3" or 4" pipes
- Inlet/Outlet: 4.3" OD (4" PVC Sched 40 size compatible)
- Designed to conceal electrical disconnect
- Quiet operation (Mounting method limits vibration transfer)

The SF180 is as effective as our popular RP145 fans!

FAN SPECIFICATIONS

MODEL	FAN DUCT DIAMETER	WATTS	MAX. PRESSURE "WC	TYPICAL CFM vs. STATIC PRESSURE WC				
				0"	0.5"	1.0"	1.5"	2.0"
SF180	3" or 4"*	53-71	2.1	149	127	96	61	-

*Exterior Switch Kit and PVC offset coupling sold separately; see p. 5 for pricing.



Made in USA with US and imported parts

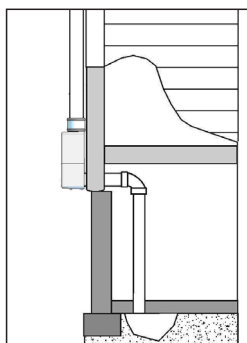


ETL Listed

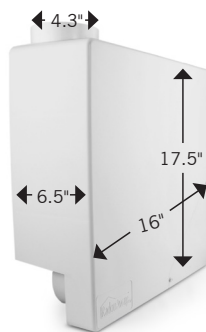


All RadonAway® inline radon fans are covered by our 5-year, hassle-free warranty

TECHNICAL DRAWINGS



Outdoor Installation



Sizing

ADAPTING SF180 TO 3" PIPE

Our PVC offset coupling is specially designed for use in adapting the SF180 to 3" PVC pipe. The offset coupling must be used when adapting to 3" pipe to prevent excessive condensation build-up in the fan. The fitting is 4.5" in diameter and has a 3.5" diameter socket to accept 3" PVC pipe. When installed properly, the coupling allows for condensation drainage from the bottom of the fan straight through to the PVC pipe.

The offset can also be used on the discharge side of the fan to maintain the proper spacing, allowing the installer to run the stack straight up out of the fan without the need for other fittings. The offset connects to the SF180 using standard 4 x 4 couplings. We suggest white to compliment the attractive install of the stay-white SF180.



3 x 4 PVC Offset Coupling pricing, p. 5

SF180 SERIES BY RADONAWAY®

RADON
FANS



FAN PRICING

MODEL	P/N	UNIT PRICE			Available for use with SF180*		
		1-3	4-7	8+			
SF180	28317				6' Power Cord Kit	27005	
					8' Power Cord Kit	27004	

Quantity discounts determined by number of RadonAway® fans (any model) per order. Ask about Star20 pricing for bigger discounts!

*18 ga 3-prong plug and bushing

Recommended for use with SF180			
3" x 4" PVC Offset Coupling*	13165	4.5" diam. with 3.5" diam. socket to accept 3" PVC	
Exterior Switch Kit	28328	Includes single gang, one-socket exterior box; 0.75" slip x 0.5" FPT adapter; two 0.5" MPT water-tight cord bushings; 0.5" PVC nut; switch; exterior switch cover; 30" SJOW Cord	

*See p. 4 for details



Power Cord Kit



Exterior Switch Kit

INSTALLATION ACCESSORIES

ITEM	COUPLING SIZE	COLOR	P/N	QTY / CASE	UNIT PRICE		
					< CASE	CASE	3+ CASES*
Flexible Coupling	4 x 4	black	79012	40			
	4 x 4	white	79040	40			

*Must be purchased in case quantity.

NOTE: Coupling sizes are for selection only, actual sizes may vary fractionally. See Flexible Coupling Sizing Chart on p. 16 or at radonaway.com/couplings



Buy a case of couplings and a case of NEW U-tubes and SAVE!

ITEM	COLOR	P/N	QTY / CASE	UNIT PRICE		
				< CASE	CASE	2+ CASES*
Easy Read U-tube Manometer	Blue	50017	50	\$ 7.99		
	Red	50018	50	7.99		

*Must be purchased in case quantity. For more package details see p. 15



Easy Read U-Tube package includes: Hangable bag with homeowner brochure and all system labels to help you to comply with new RRNC 2.0 "Model Code" Standard (see p. 63) and provide important system information.

RP SERIES BY RADONAWAY®



Photo courtesy of St. Louis Radon

FEATURES

- Energy efficient
- Ultra-quiet operation
- Meets all electrical code requirements
- Water-hardened motorized impeller
- Seams sealed to inhibit radon leakage (RP140 & RP145 double snap sealed)
- RP140 Energy Star® Rated
- ETL Listed - for indoor or outdoor use
- Thermally protected motor
- Rated for commercial and residential use

The RP145 is the most popular fan in the industry!

The RP145 radon fan provides high air flow and is one of the most energy-efficient radon mitigation fans in the industry.

FAN SPECIFICATIONS

MODEL	FAN DUCT DIAMETER	WATTS	MAX. PRESSURE "WC	TYPICAL CFM vs. STATIC PRESSURE WC					RRNC 2.0 Radon Fan Type ¹
				0"	0.5"	1.0"	1.5"	2.0"	
RP140	4"	15-21	0.8	135	70	-	-	-	RF1
RP145	4"	41-72	2.1	166	126	82	41	3	RF1, RF2
RP260	6"	50-75	1.6	272	176	89	13	-	RF2
RP265	6"	91-129	2.3	334	247	176	116	52	-
RP380	8"	95-152	2.3	497	353	220	130	38	-

¹ Suitable as designated by the new Reducing Radon in New Construction Standard, RRNC 2.0. See chart p. 63.



Made in USA with US and imported parts

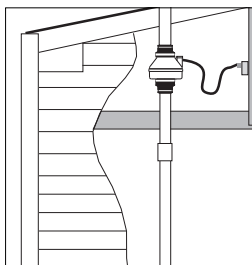


ETL Listed

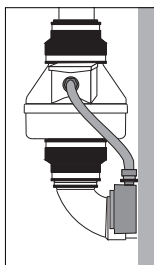


All RadonAway® inline radon fans are covered by our 5-year, hassle-free warranty

TECHNICAL DRAWINGS



Indoor Installation



Outdoor Installation



Model	d	D	H
RP140	4.5"	9.7"	8.5"
RP145	4.5"	9.7"	8.5"
RP260	6"	11.75"	8.6"
RP265	6"	11.75"	8.6"
RP380	8"	13.41"	10.53"



FINDING RADON "HOT SPOTS"

The Best Diagnostic Aid

The success of a tough mitigation often depends on finding the "hot spots" – the major sources of radon entry. Our unique RadStar GM 1-2, a two-in-one grab-sampling device and micro manometer, helps take the guesswork out of identifying those sources.

RadStar GM 1-2
p. 21



RP SERIES BY RADONAWAY®

RADON
FANS



FAN PRICING

MODEL	P/N	UNIT PRICE		
		1-3	4-7	8+
RP140	23029-1			
RP145	23030-1			
RP260	23032-1			
RP265	23033-1			
RP380	28208			

Available for use with RP Series		
6' Power Cord Kit*	27005	
8' Power Cord Kit*	27004	
Fan Mounting Bracket	25007	
RP380 Mounting Bracket	25033-1	

*18 ga 3-prong plug and bushing



Power Cord Kit

Quantity discounts determined by number of RadonAway® fans (any model) per order. Ask about Star20 pricing for bigger discounts!

INSTALLATION ACCESSORIES

ITEM	COUPLING SIZE	COLOR	FOR USE WITH	P/N	QTY / CASE	UNIT PRICE		
						<CASE	CASE*	3+ CASES*
Flexible Couplings	3 x 4	black	RP140, RP145	79011	40			
	3 x 4	white	RP140, RP145	79038	40			
	4 x 4	black	RP140, RP145	79012	40			
	4 x 4	white	RP140, RP145	79040	40			
	4 x 6	black	RP260, RP265	79013	20			
	4 x 6	white	RP260, RP265	79039	30			



*Must be purchased in case quantity.

NOTE: Coupling sizes are for selection only, actual sizes may vary fractionally. See Flexible Coupling Sizing Chart on p. 16 or at radonaway.com/couplings

ITEM	COLOR	P/N	QTY / CASE	UNIT PRICE		
				< CASE	CASE	2+ CASES*
Easy Read U-tube Manometer	Blue	50017	50			
	Red	50018	50			

*Must be purchased in case quantity. For more package details see p. 15



Easy Read U-tube package includes: Hangable bag with homeowner brochure and all system labels to help you to comply with new RRNC 2.0 "Model Code" Standard (see p. 63) and provide important system information.

XP/XR SERIES BY RADONAWAY®



FEATURES

- Low energy consumption
- Quiet operation
- Low-profile design
- Water-hardened, thermally protected motor
- Seams sealed to inhibit radon leakage
- Meets all electrical code requirements
- ETL Listed - for indoor or outdoor use
- Rated for commercial and residential use

SHOP@RADONAWAY.COM

Shop NOW on our website.  See page 67 for more details.

FAN SPECIFICATIONS

MODEL	FAN DUCT DIAMETER	WATTS	MAX. PRESSURE "WC	TYPICAL CFM vs. STATIC PRESSURE WC				RRNC 2.0 Radon Fan Type ¹
				0"	0.5"	1.0"	1.5"	
XP151	4"	45-60	1.4	150	115	69	-	RF1
XP201	4"	45-66	1.8	112	95	70	40	RF1
XR261	6"	67-117	1.7	217	149	87	27	-

¹ Suitable as designated by the new Reducing Radon in New Construction Standard, RRNC 2.0. See chart below.



Made in USA with US and imported parts

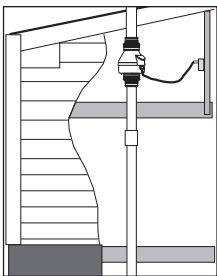


ETL Listed

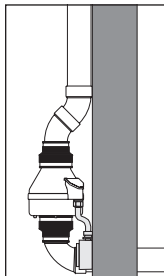


All RadonAway® inline radon fans are covered by our 5-year, hassle-free warranty

TECHNICAL DRAWINGS



Indoor Installation



Outdoor Installation



Model	d	D	H
XP151	4.5"	8.5"	9.5"
XP201	4.5"	8.5"	9.5"
XR261	6"	8.5"	9.5"

RRCN 2.0 RADON FAN TYPES

PIPE SIZE Nominal (I.D.)	TOTAL FOUNDATION AREA		
	Less than 1600 sq. feet	1600 to 2500 sq. feet	Greater than 2500 sq. feet
	Less than 149 sq. meters	149 to 232 sq. meters	Greater than 232 sq. meters
(3 inch) [7.6 cm]	Use Radon Fan Type: RF1 RF1 Minimum rating:* 50 cfm @ 0.5" WC [85m ³ /hr @ 125 Pa]	Use Radon Fan Type: RF2 RF2 Minimum rating:* 75 cfm @ 1.0" WC [127m ³ /hr @ 250 Pa]	Radon fan to be sized by a certified/licensed radon mitigator.
(4 inch) [10 cm]	Use Radon Fan Type: RF1 RF1 Minimum rating:* 50 cfm @ 0.5" WC [85m ³ /hr @ 125 Pa]	Use Radon Fan Type: RF1 RF1 Minimum rating:* 50 cfm @ 0.5" WC [85m ³ /hr @ 125 Pa]	Radon fan to be sized by a certified/licensed radon mitigator.

*Radon Fan Types RF1 & RF2 minimum flow and pressure ratings are manufacturer specifications.

XP/XR SERIES BY RADONAWAY®

RADON
FANS



FAN PRICING

MODEL	P/N	UNIT PRICE		
		1-3	4-7	8+
XP151	23010-1			
XP201	23011-1			
XR261	23019-1			

Available for use with XP/XR Series		
6' Power Cord Kit*	27005	
8' Power Cord Kit*	27004	
Fan Mounting Bracket	25007	

*18 ga 3-prong plug and bushing



Power Cord Kit

Quantity discounts determined by number of RadonAway® fans (any model) per order. Ask about Star20 pricing for bigger discounts!

INSTALLATION ACCESSORIES

ITEM	COUPLING SIZE	COLOR	FOR USE WITH	P/N	QTY / CASE	UNIT PRICE		
						<CASE	CASE*	3+ CASES*
Flexible Couplings	3 x 4	black	RP140, RP145	79011	40			
	3 x 4	white	RP140, RP145	79038	40			
	4 x 4	black	RP140, RP145	79012	40			
	4 x 4	white	RP140, RP145	79040	40			
	4 x 6	black	RP260, RP265	79013	20			
	4 x 6	white	RP260, RP265	79039	30			



*Must be purchased in case quantity.

NOTE: Coupling sizes are for selection only, actual sizes may vary fractionally. See Flexible Coupling Sizing Chart on p. 16 or at radonaway.com/couplings

Buy a case of couplings and a case of NEW U-tubes and SAVE!

ITEM	COLOR	P/N	QTY / CASE	UNIT PRICE		
				< CASE	CASE	2+ CASES*
Easy Read U-tube Manometer	Blue	50017	50			
	Red	50018	50			

*Must be purchased in case quantity. For more package details see p. 15



Easy Read U-Tube package includes: Hangable bag with homeowner brochure and all system labels to help you to comply with new RRNC 2.0 "Model Code" Standard (see p. 63) and provide important system information.

GP SERIES BY RADONAWAY®



Photo courtesy of Radiation Data

FEATURES

- Quiet Operation
- Water-hardened motor
- Seams sealed under negative pressure to inhibit radon leakage
- Mounts on duct pipe or with integral flange
- 3" diameter ducts for use with 3" or 4" pipe
- Electrical box for hard wire or plug in
- ETL Listed - for indoor or outdoor use
- 4 interchangeable GP models

FAN SPECIFICATIONS

MODEL	FAN DUCT DIAMETER	WATTS	MAX. PRESSURE "WC	TYPICAL CFM vs. STATIC PRESSURE WC						
				1.0"	1.5"	2.0"	2.5"	3.0"	3.5"	4.0"
GP201	3"	40-60	2.0	82	58	5	-	-	-	-
GP301	3"	55-90	2.6	92	77	45	10	-	-	-
GP401	3"	60-110	3.4	93	82	60	40	15	-	-
GP501	3"	70-140	4.2	95	87	80	70	57	30	10



Made in USA with US and imported parts

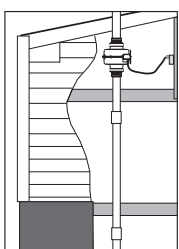


ETL Listed

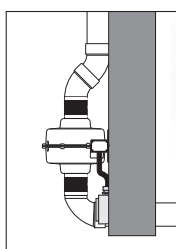


All RadonAway® inline radon fans are covered by our 5-year, hassle-free warranty

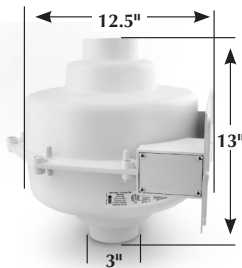
TECHNICAL DRAWINGS



Indoor Installation



Outdoor Installation



STACKING FANS

"What happens if I stack one fan on top of the other?" This is a question we hear often. Mounting two fans in a series will certainly affect the performance of the overall system but may also affect the service life of the fans. In general, the static capability of two fans is doubled but the airflow remains about the same.

Stacking fans can be useful in dealing with very tight subsoils, but BEWARE that the heat generated in Fan 2 is input to Fan 1, which may cause the fan to run hot and reduce the service life of the fan. If you do stack fans, ensure that you provide adequate airflow through the fan to keep the bearings and the motor windings cool to avoid customer complaints and warranty problems.

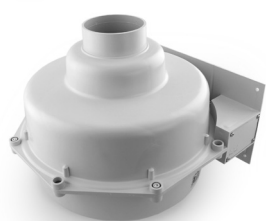
Call RadonAway® for more tips on this topic.



Flexible Couplings, see p. 16

GP SERIES BY RADONAWAY®

RADON
FANS



FAN PRICING

MODEL	P/N	UNIT PRICE		
		1-3	4-7	8+
GP201	23007-1			
GP301	23006-1			
GP401	23009-1			
GP501	23005-1			

Available for use with GP Series		
6' Power Cord Kit*	27005	
8' Power Cord Kit*	27004	

*18 ga 3-prong plug and bushing



Power Cord Kit

Quantity discounts determined by number of RadonAway® fans (any model) per order.
Ask about Star20 pricing for bigger discounts!

INSTALLATION ACCESSORIES

ITEM	COUPLING SIZE	COLOR	P/N	QTY / CASE	UNIT PRICE		
					<CASE	CASE*	3+ CASES*
Flexible Coupling	3 x 3	black	79010	40			
	3 x 3	white	79037	40			
	3 x 4	black	79011	40			
	3 x 4	white	79038	40			



*Must be purchased in case quantity.

NOTE: Coupling sizes are for selection only, actual sizes may vary fractionally. See Flexible Coupling Sizing Chart on p. 16 or at radonaway.com/couplings

Buy a case of couplings and a case of NEW U-tubes and SAVE!



ITEM	COLOR	P/N	QTY / CASE	UNIT PRICE		
				< CASE	CASE	2+ CASES*
Easy Read U-tube Manometer	Blue	50017	50			
	Red	50018	50			



Easy Read U-Tube package includes:
Hangable bag with homeowner brochure and all system labels to help you to comply with new RRNC 2.0 "Model Code" Standard (see p. 63) and provide important system information.

*Must be purchased in case quantity. For more package details see p. 15

GP500 BY RADONAWAY®

FEATURES

- High performance
- Stay-white finish
- Attractive alternative to inline fan
- Two-year hassle-free warranty
- Thermally protected
- Internal condensate bypass

WHY CHOOSE THIS FAN?

Radon professionals choose the RadonAway® GP500 when the radon mitigation job calls for an effective, attractive, high-performance solution.

FAN SPECIFICATIONS

MODEL	FAN DUCT DIAMETER	WATTS	MAX. PRESSURE "WC	TYPICAL CFM vs. STATIC PRESSURE WC						
				1.0"	1.5"	2.0"	2.5"	3.0"	3.5"	4.0"
GP500	3"	70-130	4.3	88	80	74	65	54	28	14



Made in USA with US and imported parts

FAN PRICING

MODEL	P/N	UNIT PRICE			Available for use with GP500		
		1-3	4-7	8+			
GP500	23003-1				6' Power Cord	99030-2	
					8' Power Cord	99030-1	

Quantity discounts determined by number of RadonAway® fans (any model) per order. Ask about Star20 pricing for bigger discounts!

ACCESSORIES FOR GP500

ITEM	P/N	PRICE
3" Hose Clamp	67013	
Flexible Pipe Connector Kit 3.5" ID x 2' L	79019	
3 x 3 White Flex Coupling	79037	



Hose Clamp

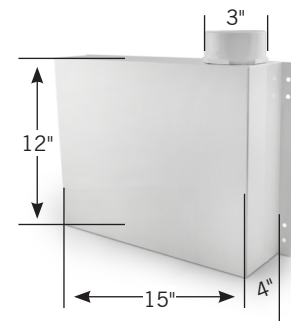


Flexible Pipe Connector Kit



Flex Coupling

TECHNICAL DRAWING

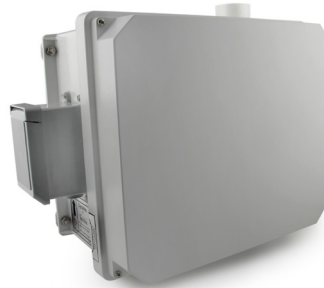


HIGH SUCTION SERIES BY RADONAWAY®

RADON
FANS

FEATURES

- Internal condensate bypass
- Brackets for vertical mounting indoors and outdoors
- Inlet: 3.0" PVC / Outlet: 2.0" PVC
- Weight: 18 lbs.
- Size: 15.5"W x 13.3"H x 8.2"D
- Warranty: 1 year (3-year option available)



High Suction Fan with switched electrical box.



High Suction Fan with cord.

WHY CHOOSE THIS FAN?

HS fans offer a proven solution for tough radon mitigation jobs, providing up to 25 times the suction of inline tube fans to deal with sand, tight soil or clay sub-slab material.

FAN SPECIFICATIONS

MODEL	WATTS	MAX. PRESSURE "WC	TYPICAL CFM vs. STATIC PRESSURE WC					
			0"	10"	15"	20"	25"	30"
HS2000 with cord	150-270	18	110	72	40	-	-	-
HS3000 with cord	105-195	27	40	33	29	24	18	-
HS5000 with cord	180-320	50	53	47	42	38	34	24
HS2000E with switch box	150-270	18	110	72	40	-	-	-
HS3000E with switch box	105-195	27	40	33	29	24	18	-
HS5000E with switch box	180-320	50	53	47	42	38	34	24



Made in USA with US and imported parts

ACCESSORIES FOR HS SERIES

ITEM	P/N	PRICE
Optional 3-year warranty	HS3YR	
2" Schedule 40 Vent Muffler	24002	
Magnehelic Manometer 0-50" WC	50001-2	
2 x 2 Flex Coupling (black)	79020	
2 x 3 Flex Coupling (black)	79027	
3 x 3 Flex Coupling (white)	79037	
3 x 3 Flex Coupling (black)	79010	

NOTE: Coupling sizes are for selection only, actual sizes may vary fractionally. See Flexible Coupling Sizing Chart on p. 16 or at radonaway.com/couplings

FAN PRICING

MODEL	P/N	UNIT PRICE	
		1-4	5+
HS2000 with cord	23004-1		
HS3000 with cord	23004-2		
HS5000 with cord	23004-3		
HS2000E with switch box	23004-4		
HS3000E with switch box	23004-5		
HS5000E with switch box	23004-6		



Flex Coupling



Magnehelic Manometer



Muffler

HP/FR FANS BY FANTECH



FEATURES

- UL listed for outdoor use or in wet locations and in conditioned airstreams up to 140° F
- External wiring box for ease of connection
- Waterproof gasket on wiring box
- Five-year warranty
- Other models available by special order

FAN SPECIFICATIONS

MODEL	FAN DUCT DIAMETER	WATTS	MAX. PRESSURE "WC
HP2133	4"	14-20	0.84
HP190	4"	60-92	1.99
HP2190	4"	60-85	1.93
FR150	6"	76-93	1.56
HP220	6"	85-152	2.46

FAN PRICING

MODEL	P/N	UNIT PRICE		
		1-3	4-7	8+
HP2133	51003-7			
HP190	51003-6			
HP2190	51003-9			
FR150	51003-2			
HP220	51003-3			

Available for use with HP/FR Fans		
6' Power Cord Kit*	27005	
8' Power Cord Kit*	27004	
Optional Mounting Bracket	67026	

*18 ga 3-prong plug and bushing

Quantity discounts determined by number of fans per order.

COUPLINGS



COUPLING SIZE	COLOR	FOR USE WITH	P/N	PRICE
4 x 4	Black	HP2133, HP2190	79012	
4 x 4	White	HP2133, HP2190	79040	
4.5 x 4	Black	HP190	79051	
4.5 x 4	White	HP190	79055	
4 x 6	Black	FR150, HP220	79013	
4 x 6	White	FR150, HP220	79039	

NOTE: Coupling sizes are for selection only, actual sizes may vary fractionally. See Flexible Coupling Sizing Chart on p. 16 or at radonaway.com/couplings

KEY SYSTEM & RRNC COMPONENTS

RADONAWAY® EASY READ MANOMETER

DESCRIPTION

The RadonAway® Easy Read U-tube Manometer, installed in nearly a million homes to date, measures vacuum pressure, allowing the homeowner to know at a glance whether the radon system is operating.* Our u-tube manometer is packaged as part of a System Monitoring and Homeowner Information packet containing all labels and materials needed to comply with current standards.

* This device does NOT measure radon levels.



Made in USA with US and imported parts



FEATURES

- Reads 0-4.5" WC
- Non-toxic fluid
- Adjustable zero
- Molded scale curved to fit system pipe

PACKET INCLUDES

- Easy Read U-tube Manometer (with tubing and 2 self-tap screws)
- Installation instructions
- System and component label package
 - Pipe labels (4 provided)
 - Fan circuit label (2 sizes provided)
 - System label
 - Sump label
- System information brochure
- Clear plastic bag with twist tie (for hanging information on system)

U-TUBE PACKET BENEFITS



The RRNC 2.0 AARST-ANSI Standard, in Section 1001, specifies certain items that must be located with an ASD system in a “readily observable” indoor location. Our newly-expanded System Label Package and Homeowner Information brochure, now included with our U-tube kits, help you to comply with the standard. After you install a system, all you have to do is properly affix the labels and manometer, and either give the documentation to the homeowner or affix it in the provided clear plastic bag to a “readily observable” part of the system (usually on or near the manometer).

See RRNC 2.0, p. 63.

To request one complimentary copy of the RRNC 2.0 standard, go to radonaway.com/standard

FEATURES

ITEM	COLOR	P/N	QTY / CASE	UNIT PRICE		
				< CASE	CASE	2+ CASES ¹
Easy Read U-tube Manometer	Blue	50017	50			
	Red	50018	50			
Replacement Oil ² (½ oz.)	Blue	20011	N/A			
	Red	20014	N/A			

¹Must be purchased in case quantity. ²One bottle of the refill fluid will refill 4 ½ U-Tube Manometers.

KEY SYSTEM & RRNC COMPONENTS

FLEXIBLE COUPLINGS

High performance flexible PVC couplings with stainless steel clamps. White couplings are UV tolerant and chemical resistant for attractive outdoor installations.



PRICING AND SPECIFICATIONS

COUPLING SIZE	FOR USE WITH	UNIT PRICE (Black)					UNIT PRICE (White)				
		P/N	QTY / CASE	< CASE	CASE	3+ CASES*	P/N	QTY / CASE	< CASE	CASE	3+ CASES*
2 X 2	HS Series	79020	40				-	-	-	-	-
2 X 3	HS Series	79027	40				-	-	-	-	-
3 X 3	GP Series	79010	40				79037	40			
3 X 4	XP Series, GP Series, RP140, RP145	79011	40				79038	40			
3 X 6	XR261	79050	20				79152	20			
4 X 4	XP Series, RP140, RP145, SF180; Fantech HP2190 and HP2133	79012	40				79040	40			
4 X 6	XR261, RP260, RP265; Fantech FR150, HP220	79013	20				79039	30			
4 X 4.5	Fantech HP190	79051	20				79055	20			
6 X 6	RP260, RP265	79095	10				-	-	-	-	-
6 X 8	RP380	79091	10				-	-	-	-	-

*Must be purchased in case quantity.

FLEX COUPLING SIZING CHART

There has been some confusion in coupling size over the years. In the radon industry, we use flexible couplings to create a service break between the radon fan and the vent pipe. The vent pipe normally consists of schedule 20 or 40 PVC pipe, and the flexible couplings allow the installer to adapt to various size vent pipes and fans. The fans typically have 3.5", 4.5", 6", and 8" O.D. intake and exhaust openings. The PVC pipe will range between 2.5" and 6.5" O.D.

Flexible couplings are not made specifically for the radon industry. These are "repair" couplings widely used in the plumbing and sewage trades to adapt to different types and sizes of piping. When using the flex couplings with our 6" and 8" fans, you may find that the model names do not match up precisely with the manufacturer's coupling name. Some connections may be a bit snug, but they do fit, and they are all that is available for making these connections.

Please use the chart below as an aid to better understand the names, sizing, and use of flexible couplings with RadonAway® Fans.

COUPLING SIZE	FLEX COUP. I.D.	MANUFACTURER'S MODEL NAME	PVC PIPE SIZE	RADONAWAY PRODUCT CONNECTION
2 X 2	2.45" x 2.45"	2" Plastic or Cast Iron to 2" Plastic or Cast Iron	2"	2" Fan: Discharge of HS Series Fan
2 X 3	2.45" x 3.45"	2" Plastic or Cast Iron to 3" Plastic or Cast Iron	2"	AlRaider Discharge Connection
3 X 3	3.45" x 3.45"	3" Plastic or Cast Iron to 3" Plastic or Cast Iron	3"	3" Fans: GP Series Fans, Intake of HS Series Fans
3 X 4	3.45" x 4.45"	3" Plastic or Cast Iron to 4" Plastic or Cast Iron	3" OR 4"	4" Fans: RP140, RP145, XP Series 3" Fans: GP Series
3 X 6	3.45" x 5.35"	3" Plastic or Cast Iron to 4" Clay	3"	6" Fans: XR261, RP260, RP265
4 X 4	4.45" x 4.45"	4" Plastic or Cast Iron to 4" Plastic or Cast Iron	4"	4" Fans: RP140, RP145, SF180, XP Series
4 X 6	4.45" x 5.75"	4" Plastic or Cast Iron to 4" Concrete	4"	-
4 X 4.5	4.45" x 4.8"	4" Plastic or Cast Iron to 4" Asbestos Cement or Ductile Iron	4"	6" Fans: XR261, RP260, RP265
6 X 6	5.35" x 6.45"	4" Clay to 6" Plastic or Cast Iron	4"	6" Fans: XR261, RP260, RP265
6 X 8	6.45" x 7.85"	6" Plastic or Cast Iron to 6" Concrete	6"	8" Fan: RP380

KEY SYSTEM & RRNC COMPONENTS

RADONAWAY® RADON-T

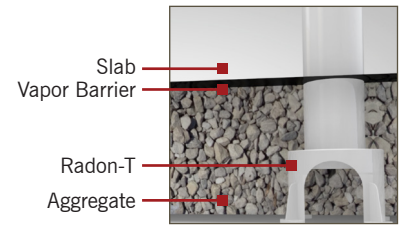
Finally! A Stable Base for New Construction Systems

Designed and manufactured by RadonAway® to replace ordinary pipe fittings as a base for RRNC and crawlspace systems, the Radon-T stabilizes the vertical pipe, saddles over perforated pipe, provides better air flow, and prevents blockage by construction debris. It is also ideal for use with VAPORMAT™ (below). See more Radon-T details on p. 30.



Watch a Radon-T installation at radonaway.com/rrnc-t

PRICING			
KIT	P/N	KITS INCLUDE	PRICE
Single Radon-T Kit	28353	- Radon-T Fitting - 4 stakes for stabilization - Cap to prevent debris entry	
Contractor Pack (12 Kits)	28354	- Instruction guide - 4 vent pipe labels	



Made in USA with US and imported parts

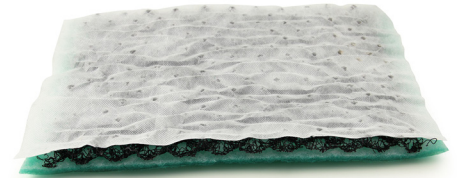
VAPORMAT™

Radon & Moisture Mitigation Channeling Systems

Available in two thicknesses, VAPORMAT™ provides a highly adaptable matting system for ASD radon, moisture, and VOC reduction. Ideal for use in new construction and crawlspace systems.

VAPORMAT™ Benefits:

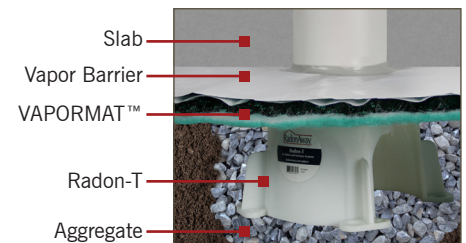
- Saves time and money
- Easy to install
- >40% recycled pre-consumer material
- LEED V4 Building Design and Construction Materials and Resources Credit 3 (1-2 Points)
- Can replace perforated piping and/or gravel under slab or radon/vapor barrier
- Cost-effective when used with the RadonAway® Radon-T
- Maintains air flow communication when used with an active fan
- Complies with building codes: IRC Appendix F, RRNC 2.0 and ASTM E-1465



See p. 29 for VAPORMAT™ accessories.

PRICING				
ITEM	P/N	SIZE/THICKNESS	WEIGHT	PRICE
VAPORMAT™	66105	4' x 50' x 0.4" thick	30 lbs per roll	
	66106	1.25' x 45' x 0.8" thick	10 lbs per roll	

¹ Ships from Indiana or Colorado ² Additional shipping charges may apply. Call for details.



RADONWAY FANS SUITABLE AS DESIGNATED BY RRNC 2.0 STANDARD

MODEL	FAN DUCT DIAMETER	WATTS	MAX. PRESSURE "WC	TYPICAL CFM vs. STATIC PRESSURE WC				RRNC 2.0 Radon Fan Type
				0"	0.5"	1.0"	1.5"	
RP140	4"	15-21	0.8	135	70	-	-	RF1
RP145	4"	41-72	2.1	166	126	82	41	RF1, RF2
RP260	6"	50-75	1.6	272	176	89	13	RF2
XP151	4"	45-60	1.4	150	115	69	-	RF1
XP201	4"	45-66	1.8	112	95	70	40	RF1

See p. 63 for additional RRNC charts and information.

RADON TESTING

AccuStar® Labs provides accurate, easy-to-use radon testing products. AccuStar® test kits and laboratories are NRPP and NRSB certified, NELAP accredited, and licensed in all states that have such requirements.

AccuStarLabs.com features enhanced online test results.



SHORT TERM LIQUID SCINTILLATION (LS)

Radon in Air Test Kit

- Quick initial residential testing
- Post-mitigation system evaluation

Kit includes a single LS test device, instructions, and laboratory analysis. First Class return postage is provided.*

Double LS kit for Real Estate transactions also available. (See pricing below)



SHORT TERM ACTIVATED CHARCOAL (AC)

Radon in Air Test Kit

- Quick initial residential testing
- Post-mitigation system evaluation

Kit includes a single 4" AC test device, instructions, and laboratory analysis. First Class return postage is provided.*



LONG TERM ALPHA TRACK

Radon in Air Test Kit

- Long-term measurements (91 days or more)
- Accurate and easy to use
- Closed-house conditions not necessary

Kit includes one Alpha Track test device, instructions, and laboratory analysis. First Class return postage is provided (US only).*



SHORT TERM LIQUID SCINTILLATION (LS)

Radon in Water Test Kit

- Fast, reliable, and efficient
- Easy sample collection

Kit includes a specialized water sample collection vial, instructions, and laboratory analysis. First Class return postage is provided.*

*Fast UPS return service available. Call for details.

Rated #1 by a leading consumer advocacy group!

PRICING & DESCRIPTIONS

ITEM	P/N	DESCRIPTION	UNIT PRICE	
			1-11	12+
Liquid Scintillation Kit*	28034-1	2 to 4 day test; includes one test vial, analysis, and return postage. (Not available in Canada)		
Double LS Kit for Real Estate*	28327	2 to 4 day test; includes two test vials, analysis, and return postage. (Not available in Canada)		
4" Charcoal Canister Kit*	28139	2 to 4 day test; includes one test canister, analysis, and return postage. (Not available in Canada)		
Alpha Track Kit*	28033-1	Long-term test (3 months to 1 year); includes one device, analysis, and return postage. (Available in Canada)		
Radon In Water Kit*	28140	Easy to use, includes analysis, and return postage. (Not available in Canada)		

Note: All test kit sales are final. No returns accepted. For faster test results, ask about return UPS service.

*Not available in NJ. Call for special NJ test kits and prices.



Made in USA with US and imported parts.



ACCESSORIES FOR TEST KITS

ITEM	P/N	DESCRIPTION	PRICE
100 Tamper Protection Labels	15014-3	Word "VOID" appears on label if disturbed or removed. Adheres to most clean surfaces.	
500 Tamper Protection Labels	15014-4		



Made in USA with US and imported parts

All models include MS Windows based software to transfer test data to your laptop or desktop computer, and a Data Download Cable Kit (USB 2.0 to DB9).

RADSTAR RS800

The most accurate of electronic radon monitors

- Top-of-the-line radon monitor - 24 cph per pCi/L (RS800i 0.65 cph per Bq/m³)
- Hourly radon, temperature and relative humidity measurements
- Internal rechargeable battery
- Motion sensor
- 12- or 24-hour start-time delay option
- Downloadable software with graphing option
- Available for purchase or rental

RADSTAR RS300

Affordable, accurate continuous radon monitoring

- Excellent sensitivity - 16 cph per pCi/L (RS300i 0.43 cph per Bq/m³)
- Hourly radon measurement
- Internal rechargeable battery
- Motion sensor
- Downloadable software with graphing option and ability to calculate 12- or 24-hour delay

PRICING & DESCRIPTIONS

ITEM	P/N	DESCRIPTION	PRICE
RadStar RS800	28154	Includes tripod. Available for monthly rental*. Please call 800-767-3703 for details.	
RadStar RS300	28157	For purchase only. Annual calibration service available (see below).	
RadStar RS800i	28265	For International use.	
RadStar RS300i	28264	For International use.	



RadStars are manufactured by RadonAway® exclusively for AccuStar Labs, and are NRPP Listed & EPA Verified.

*Rentals available in US only.

CONTINUOUS RADON MONITOR ACCESSORIES

PRICING & DESCRIPTIONS

ITEM	P/N	PRICE
Printer (with cable)	28345	
Large carrying case	24011	
Small carrying case	24026	
Tripod	28145	
Data download cable kit, USB 2.0 to DB9	28262	
Annual Calibration Service	CALIBRATION	



Large Carrying Case



Tripod



Small Carrying Case



Printer

DIAGNOSTIC AIDS



Fan Selection & Permeability Test Kit



Sub-Slab Communications Test Kit



DM1 Micro-Manometer



Pocket Air Flow Tracker



Dragon Puffer Air Flow Kit



Puffer Fluid Refill



Smoke Matches



Smoke Pen

DIAGNOSTIC AIDS: PRICING & DESCRIPTIONS

ITEM	P/N	DESCRIPTION	PRICE
Fan Selection & Permeability Test Kit	28003	Contains 0-100" Magnahelic, carrying case and instructions	
Sub-Slab Communications Test Kit	28004	Contains 0-0.25" Magnahelic, carrying case and instructions	
DM1 Micro-Manometer by Infiltec	50008	Portable digital micro-manometer; 0.001"WC or 0.1 Pa resolution, pressure range of +/- 3.0" WC and +/- 750m Pa	
Kestrel 4200 Pocket Air Flow Meter	50015	Pocket-size air flow tracker monitors and reports an extensive list of environmental parameters — from temperature (Celsius or Fahrenheit) to barometric pressure, altitude, relative humidity, and more. Stores information and charts up to 2000 data points for later analysis. Features: Waterproof; backlight for low light conditions; data logger (automatic and manual); minimum, maximum and average values; multi-function 3-line display; data charting; humidity sensor and more. Includes: Soft carry pouch, neck lanyard, 2 AAA batteries. Made in USA.	
Dragon Puffer Air Flow Indicator Kit	28363	Kit includes: Puffer, pencil stream adapter, 3oz bottle of non-toxic puffer fluid (enough for 50 rooms), fill nozzle, 2 cone caps, hard plastic carrying case, screwdriver, operating instructions and MSDS sheet, 7 AA alkaline batteries	
Puffer Fluid Refill	80003	3oz bottle (50 rooms)	
Smoke Matches*	28368	Box of 20. Burn time about 20 seconds; 3-year shelf life; striker on box.	
Smoke Pen*	28369	Includes one reusable pen with 6 wicks. Provides up to 3 hours of smoke or 360 30-second tests. No harmful chemicals. Wicks may produce some ash.	
Smoke Pen Wicks*	28370	6 Replacement wicks	

NOTICE REGARDING SMOKE STICKS

Due to federal transportation regulations, we no longer offer TT Smoke sticks and other products that contain titanium tetrachloride.

RADONAWAY® RADSTAR GM 1-2

The RadStar GM 1-2 is a one-of-a-kind diagnostic aid designed specifically for the needs of radon mitigation professionals. The radon grab sampler feature is the perfect diagnostic tool to assist you in finding radon sources. The micro manometer measures pressure field extension. The GM 1-2 comes in its own sturdy, foam-lined carrying case.



FEATURES

1 - Radon Grab Sampler

- Performs a 6-minute radon grab sample
- Displays real-time alpha particle counts
- Readings can be in pCi/L or Bq/m³
- Approximately 5-hour battery life

2 - Micro Manometer

- Time Average option adjusts readings for high wind or other environmental conditions
- Readings can be in "WC or Pascals
- Approximately 5-day battery life if only being used as a Micro Manometer

ITEM	P/N	DESCRIPTION	PRICE
RadStar GM 1-2	28337	Includes: Charging Adapter, Micro Manometer Tubing, Grab Sampler Tubing and 6 inline filters	
RadStar GM 1-2i	28343	International model (same as above) includes international power supply.	
Replacement Filters	25060	5 RadStar GM 1-2 replacement inline filters	



Replacement Filters



Made in USA with US and imported parts

CORENTIUM DIGITAL RADON MONITOR

The innovative Corentium is a stand-alone, cellphone-sized electronic radon monitoring device. Easy to use and read, it is ideal for professionals for use as a diagnostic aid before and after mitigations or for homeowners who want to monitor radon levels in their homes. The Corentium is not intended to take the place of certified, approved radon testing methods.



FEATURES

- Easy Read LCD display
- One week and one month averages
- Advanced technology
- Battery operated

ITEM	P/N	DESCRIPTION	PRICE
Corentium	28397	Includes: Monitor, 2 AA batteries and instructions	

BASEMENT SEALING

SEALANTS



RadonAway® Pro PGS



Vulkem Sealant



Geocel Urethane Foam



Nuflex 466

ITEM	P/N	DESCRIPTION	TUBE SIZE (OZ)	COLOR	UNIT PRICE	
					<CASE	CASE
NEW! RadonAway® Pro PGS	68105	Professional grade sealant; non-sag, flexible, moisture-curing, long-lasting, low VOC content	10.1	Limestone		1
Vulkem Self-Leveling Sealant	28032	Polyurethane, well-suited for concrete slabs	30	Gray		-
Geocel Urethane Foam	68016-1	Expands 2 ½ to 3 times; cures semi-rigid	12	-		-
NuFlex 446 Acoustical & Vapor Barrier Sealant/Adhesive	68071	Specially formulated to adhere to most vapor barrier films, wood, metal, concrete and foam boards; non-skinning, permanently flexible and non-slumping; water resistant, even when immersed	10.1	Black		2

¹ 24 tubes per case ² 12 tubes per case NOTE: See p. 29 for additional sealing products.

Which sealant should you use? Go to RadonAway.com/sealants to view our new chart, **Choosing the Right Sealant for the Job.**

BACKER ROD

ROUND BACKER ROD: PRICING & DESCRIPTIONS



ITEM	100' ROLL		CARTON		
	P/N	PRICE	P/N	FEET	PRICE
½" diam.	66017-2		66017-1	2500	
¾" diam.	66018-2		66018-1	1100	
1" diam.	66019-2		66019-1	600	
1 ¼" diam.	66020-2		66020-1	400	
1 ½" diam. x 6'L	N/A	N/A	66034-1	420	
2" diam. x 6'L	N/A	N/A	66035-1	240	
2 ½" diam. x 6'L	N/A	N/A	66036-1	156	
3" diam. x 6'L	N/A	N/A	66095-1	102	

HALF ROUND BACKER ROD: PRICING & DESCRIPTIONS



ITEM	P/N	DESCRIPTION	PRICE
1 ½" diam.	66034-2	48' (Eight 6' Lengths)	
2" diam.	66035-2		
2 ½" diam.	66036-2		

BASEMENT SEALING

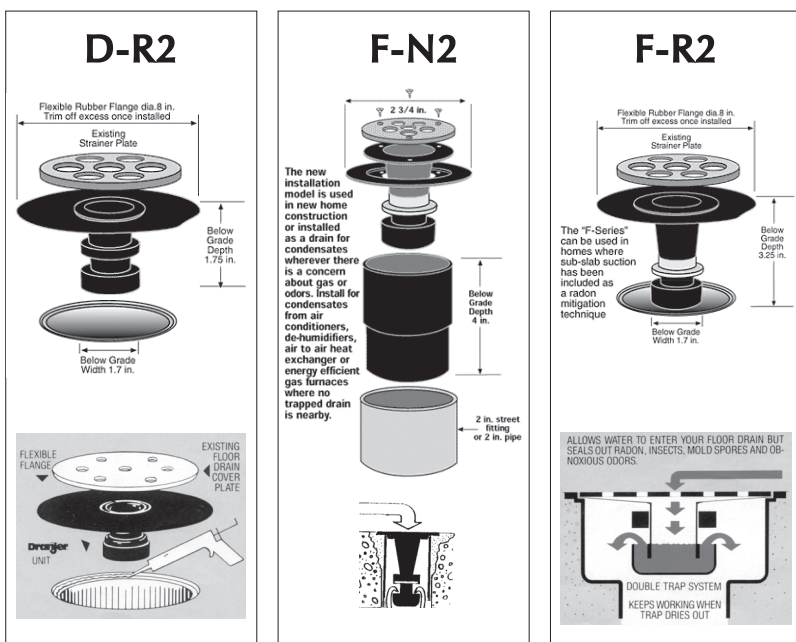
DRANJER® FLOOR DRAIN SELECTION



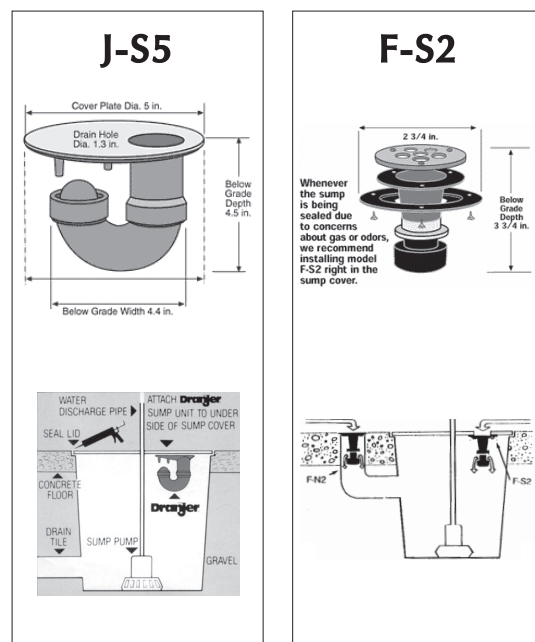
Dranjer® seals permit unrestricted flow of water into floor drains or sump pits while sealing out mold spores, insects, radon and other gases from the sub-slab floor area.

- D-R2 for retrofit in 2-8" drains
- F-R2 with flexible flange for retrofit in 2-8" drains
- F-N2 for new installations

FLOOR DRAIN APPLICATIONS



SUMP APPLICATIONS



PRICING & DESCRIPTION

ITEM	P/N	DESCRIPTION	PRICE
D-R2	28008	Retrofit floor drain seal for 2-8" drains - flexible flange, plastic valve	
F-N2	28047	New installation floor drain seal	
F-R2	28009	Retrofit floor drain seal 2-8" drains - flexible flange, brass valve	
J-S5	28007	Retrofit sump seal - ball valve	
F-S2	28010	Retrofit sump seal - brass valve	

SUMP PUMPS & ACCESSORIES

SUMP COVERS



High Rise Cover



Cover



Dome Cover



Crawlspace Basin cover



Retrofit Clear Cover

PRICING & SPECIFICATIONS

ITEM	P/N	BODY MATERIAL	PRICE**
Cover	28019	18" diameter, gas-tight solid polypropylene	
Retrofit Cover	13025-1	16" x 16" x 1/4" Clear Lexan™	
Retrofit Cover	13025-2	24" x 24" x 1/4" Clear Lexan™	
Dome Cover	28097-1	.093" ABS; easy installation without pump removal; recessed coupling accepts 4"PVC, 24"OD 3" tall	
Dome Cover	28097-2	.187" ABS; easy installation without pump removal; recessed coupling accepts 4"PVC, 24"OD 3" tall	
Crawlspace Basin Cover	28286	Fits crawlspace sump basin above (sealing kit included)	
High Rise Cover	HR-08*	22" x 21"; Includes cover, removable door, screws and sealant	

*Ships from Indiana. **Additional Shipping charges apply. Call for details.

UNISEAL

DETAILS & FEATURES

Seals penetrations in sump covers

- Long life
- Easy to install
- Replaces and outlasts most bolt-on flanges



UECG



U125



PRICING & SPECIFICATIONS

ITEM	P/N	PIPE SIZE	HOLE	PRICE
U125	67021-1	1 1/4"	2"	
U150	67021-2	1 1/2"	2 1/2"	
U200	67021-3	2"	3"	
U300	67021-4	3"	4"	
U400	67021-5	4"	5"	
UECG	67020	Electrical Cord Grommet	2"	

SUMP PUMPS & ACCESSORIES

SUBMERSIBLE PUMP BY WAYNE®

- Mechanical float switch
- Heavy duty motor with overload protection
- Durable glass-reinforced polycarbonate impeller
- High capacity 1 1/2" discharge
- 1-year warranty



SPF33

SPF50



CDU790

PRICING & SPECIFICATIONS

ITEM	P/N	HP	BODY MATERIAL	PRICE
SPF33	28013	1/3	Glass-reinforced thermoplastic pump housing; rust and corrosion proof	
SPF50	28096	1/2		
CDU790	28014-1	1/3	Cast iron pump housing for durability	

CONDENSATE PUMP BY WAYNE®

PRICING & SPECIFICATIONS

ITEM	P/N	DESCRIPTION	PRICE
Condensate Pump WCP85	28283	Removes condensation created by air conditioning and high efficiency furnaces. <ul style="list-style-type: none"> • Pumps up to 82 GPH @ 0' • Durable thermoplastic construction with built-in mounting brackets • Built-in automatic float switch with overflow safety shut-off • 2-quart reservoir • 3/8" discharge with integrated check valve • 6' power cord • Automatically removes condensation from air conditioners, furnaces and dehumidifiers 	
Tubing for WCP85	78036	3/8" ID, 1/2" OD (25' roll)	



SUMP BASIN

PRICING & SPECIFICATIONS

ITEM	P/N	BODY MATERIAL	PRICE**
Basin	28018-1	Non-corrosive, high-impact polyethylene, 18" diameter x 22" deep	
Crawlspace Sump Basin	28285	17" diameter x 16" deep, perforated and ready to install	
Crawlspace Basin Cover	28286	Fits crawlspace sump basin above (sealing kit included)	



Basin



Crawlspace Sump Basin

**Additional shipping charges apply. Call for details.

SUMP PUMPS & ACCESSORIES

STANDBY SUMP PUMP BY WAYNE®



PRICING & DESCRIPTION

ITEM	P/N	DESCRIPTION	PRICE
Standby Sump Pump	28284	<p>Provides battery-operated backup for regular sump pumps.</p> <ul style="list-style-type: none"> • Pumps up to 1750 GPH @ 0' • Corrosion-resistant thermoplastic construction • Float switch for automatic operation • Requires one 40 amp or 75 amp deep cycle battery • Keeps battery properly charged • Alarm system lets homeowner know standby system is active • Battery case included (12 volt battery not included) • Compatible with most brands of pedestal and submersible sump pumps 	

SUMPRO®



PRICING & DESCRIPTIONS

ITEM	DESCRIPTION	PRICE
SUMPRO®	<p>Provides a fully-automatic auxiliary power source.</p> <ul style="list-style-type: none"> • UL Listed • Input: 60Hz., 120 VAC, 12 AMP • Output: 120 VAC, 15AMP @ .80 service factor • Max HP: 1/2 • Powers your existing sump pump in an outage • Easy installation, no modifications or piping changes • Works with any 115V sump pump up to 3/4 HP • Fully automatic charging system • Microprocessor based system design <p>(NOTE: SUMPRO® requires two deep-cell marine batteries - sold separately)</p>	

SUMP PUMP ACCESSORIES



Drain Check Valve



Check Valve



Water Sensor Alarm



Sonin Moisture Meter

PRICING & DESCRIPTIONS

ITEM	P/N	DESCRIPTION	PRICE
1 1/2" Check Valve	28015	Prevents water from backing into the sump pump system	
PVC Tubing for 1 1/2" Check Valve	78036	3/8" ID, 1/2" OD, (25' roll)	
3" Drain Check Valve	79057	<ul style="list-style-type: none"> • Connects to daylight end of drain tile • White PVC flapper valve allows water to drain during depressurization 	
4" Drain Check Valve	79058		
Water Sensor Alarm	Single	28016	Audible tone when leak detected; 6' cord to remote sensor. (9V battery not included)
	Double	WA-DR01*	Dual Sensors. Audible tone when leak detected; 6' cord to remote sensor (9V battery not included)
Sonin Moisture Meter	50016	Analog meter with 36" cable; one-year warranty (9V battery not included)	

CRAWLSPACE ENCAPSULATION

As every radon professional knows, working in a crawlspace is not a job for the faint-hearted. When you are getting ready to seal a crawlspace, RadonAway® is right there with you. For more than two decades we have been sourcing and selling the best sealing products and equipment on the market for crawlspace and basement moisture and vapor control. This year, we have once again added to our crawlspace and basement product selection.



CRAWLSPACE AND BASEMENT SEALING PRODUCTS

Seven new products have joined the RadonAway® offerings for use in crawlspaces and basements, providing you with more than 30 product choices to make your job easier and the outcome more successful. They include:

- Vapor barriers – from 3mil to 15mil
- Vapor barrier tapes, adhesives and sealants
- Vapor barrier installation aids and tools

PRE-SEALING PRODUCTS

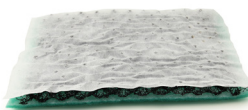
Before you install the vapor barrier, these two products will contribute to better drainage, air flow, and system stability.



Cutaway view of Radon-T before sealing

RadonAway® Radon-T

Designed and manufactured by RadonAway specifically to replace an ordinary pipe fitting as the base of a crawlspace or new construction ASD system, the Radon-T provides a more stable base for the system vent pipe, allows for up to 4-way air flow, prevents debris entry, and saddles over perforated pipe. *For Radon-T details, see p. 17 & 30.*



VAPORMAT™

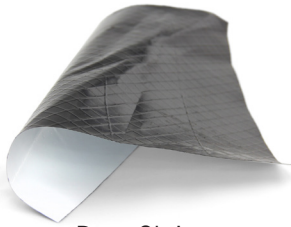
New and exclusive to the radon industry from RadonAway®, VAPORMAT™ Radon & Moisture Mitigation Channeling Systems, available in two thicknesses, can be used for easy-to-install, time-saving drainage and air flow beneath the vapor barrier. Simply cut it to size and place it over the area and Radon-T to cover the substrate, cutting a hole to allow the PVC pipe to protrude from the Radon-T. Now you're ready to install the vapor barrier. *For VAPORMAT™ details, see p. 17 & 28.*

THE FINAL STEP: THE FAN

Sealing and water removal are part of the crawlspace encapsulation process, but don't forget the final element for effective radon, moisture and vapor control: ventilation. Studies show that the most effective method for controlling crawlspace moisture and vapor intrusion is an ASD system, activated with a RadonAway® fan, of course.

For fans, see p. 4-13.

VAPOR/RADON BARRIERS



Dura-Skrim®



Rufco



StegoCrawl®



VAPORMAT™

PRICING & SPECIFICATIONS

ITEM	P/N	COLOR/DESCRIPTION	SIZE/QUANTITY	WEIGHT	PRICE
Dura-Skrim® 6WB	66099	White/black; 6 mil; heavy duty scrim reinforcement; laminated between two layers of virgin high strength polyethylene (PE) film; puncture and tear-resistant	24' x 100' x 6 mil	71 lbs per roll	2
	28342		24' x 50' x 6 mil	38 lbs per roll	2
	DS0612 ¹		12' x 100' x 6 mil	38 lbs per roll	2
	DS0606 ¹		6' x 100' x 6 mil	20 lbs per roll	2
Dura-Skrim® 12WB	28296	White/black; 12 mil; heavy duty scrim reinforcement; two sheets of high-strength virgin PE film laminated together with a third layer of molten PE; puncture and tear-resistant	24' x 50' x 12 mil	83 lbs per roll	2
	66089		24' x 100' x 12 mil	149 lbs per roll	2
	DS1212 ¹		12' x 100' x 12 mil	80 lbs per roll	2
	DS1206 ¹		6' x 100' x 12 mil	45 lbs per roll	2
Heavy Duty Vapor Barrier	DS2212 ¹	20-22mil; durable, tear-resistant, 7-ply PE	12' x 50' x 20-22 mil	63 lbs per roll	2
Rufco 300	66114 ¹	White; 3 mil; cross-laminated PE film	20' x 100' x 3 mil	32 lbs per roll	
StegoCrawl® Vapor Barrier	66108 ³	White; 15 mil multi-layer plastic extrusion manufactured with the highest grade of prime, virgin polyolefin resins	5' x 200' x 15 mil	71 lbs per roll	
	66109 ³		14' x 100' x 15 mil	99 lbs per roll	
VAPORMAT™	66105	Radon and Moisture Channeling System for use beneath radon/vapor barrier; 0.4-inch (12.5 mil) thick, highly adaptable matting; can replace perforated pipes and/or gravel	4' (48") x 50' x 0.4" thick	30 lbs per roll	2,3
	66106	Radon and Moisture Channeling System for use beneath radon/vapor barrier; 0.8-inch (23.0 mil) thick, highly adaptable matting; can replace perforated pipes and/or gravel	1.25' (15") x 45' x 0.8" thick	10 lbs per roll	2,3

¹Ships from Indiana. ²Additional Shipping charges apply. Call for details. ³Ships from Indiana or Colorado.



TECH TIP: INSTALLING VAPOR BARRIER

Crawlspaces are often low in height, dark, and dank; in other words, not a place where you want to stay unnecessarily long. After you choose a barrier in compliance with appropriate standards and local requirements for barrier density, you probably cut the barrier material to the correct size before you start. The barrier knife on the next page works well with most materials, but you will probably also want to have a good pair of 9" titanium scissors, which literally make it easy to cut even the thickest, toughest barriers. When you're measuring, don't forget the allowance for overlap and support columns. Then, before taking the barrier into the crawlspace, minimize your work within the crawl by flattening out the barrier with the side you want showing up and fold in the sides for ease of install.

BARRIER ACCESSORIES



Eternabond® Roller



Vapor Barrier Fasteners



Nuflex 446



Staples for VAPORMAT™



Vapor Barrier Tape



Eternabond® Adhesive



Barrier Knife



Stego® Term Bar

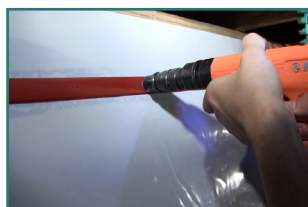
PRICING & SPECIFICATIONS

ITEM	P/N	COLOR/DESCRIPTION	SIZE/QUANTITY	WEIGHT	PRICE
Vapor Barrier Tape	68017	Black	4" x 108' x 10 mil	-	
	68066	White	4" x 108' x 10 mil	-	
Eternabond®	68086	Double-sided Microsealant® tape	2" x 50' roll	-	
Eternabond® Roller	68088	Heavy duty, 2" stainless steel roller for securing adhesive.	1	-	
Vapor Barrier X-mas Tree Fasteners	67055	White	100/bag	-	
	67063	Securely affix barrier to wall	1000/bag	-	
NuFlex® 446 Acoustical & Vapor Barrier Sealant/Adhesive	68071	Gun Grade See p. 22 for full description	1	10.1 oz tube	
Barrier Knife	28374	Durable plastic with blade storage in the handle. 3 blades included.	1	-	
Barrier Knife Blades	28375	Replacement blades	100	-	
Staples for VAPORMAT™	66107	11 ga. steel, 6" x 1", used to secure VAPORMAT™	500/box	20 lb	1,2
Stego™ Term Bar	68102	Semiflexible 4' L x 1 1/8" W plastic bar used to secure vapor barrier to concrete masonry and wood	63/box	17lb	1,2

NEW!

NEW!

¹Ships from Indiana or Colorado. ²Additional Shipping charges apply. Call for details.



STEGO® TERM BAR FOR SECURING VAPOR BARRIER

No one will claim that installing vapor barrier is easy, but flexible Stego® Term Bars, used instead of wood strips to secure vapor barrier to concrete, masonry, or wood, will make the job easier. Pre-drilled and ready to install, they are flexible enough to bend around corners, saving you time and effort.

Stego® Term Bar: Typical Installation

VAPOR/RADON BARRIERS



Crawlspace Basin Cover



Crawlspace Sump Basin



Crawlspace Sump Donut



Santa Fe Advance



Santa Fe Compact



Santa Fe Max Dry



Santa Fe Classic

PRICING & SPECIFICATIONS

ITEM	P/N	DESCRIPTION	PRICE
Crawlspace Sump Basin	28285	17" diameter x 16" deep, perforated and ready to install	2
Crawlspace Basin Cover	28286	Fits crawlspace sump basin above (sealing kit included)	
Crawlspace Sump Donut	28376	Provides tight seal for existing sump pit prior to installing crawlspace retarder/barrier. 24" x 24" to fit any sump pit up to 24" diameter.	
Santa Fe Classic	TS-CLS ¹	Can remove about 110 pints of moisture per day from spaces up to 2,500 sf. Energy Star® Rated.	2
Santa Fe Advance	TS-ADV ¹	High capacity crawlspace dehumidifier removes up to 90 pints of water per day from spaces up to 2200 sf.	2
Santa Fe Compact	TS-CPT ¹	Crawl space dehumidifier; 21"w x 12"h x 12"d. Removes about 70 pints of moisture per day from spaces up to 1,600 sf.	2
Santa Fe Max Dry	TS-MD ¹	Large-capacity unit can remove up to 155 pints of moisture per day from a 3,600-sq.-ft. space. Energy Star® Rated.	2

¹Ships from Indiana. ²Additional Shipping charges apply. Call for details.

RADON-T PIPE FITTING FOR CRAWLSPACES



When installing an ASD system in a crawlspace, start with a proper, stable base. Instead of using an ordinary pipe fitting, use the Radon-T, designed and manufactured by RadonAway® specifically to provide the stable base needed for the system's vertical pipe. It easily saddles over perforated drainage pipe and is also ideal for use with our new VAPORMAT™. Like an ordinary pipe tee, the RadonAway® Radon-T accepts regular 4" schedule 40 pipe, but its unique design also provides:

- More stability (No more leaning system pipes)
- Better air, soil gas and vapor flow
- Protection against blockage by construction debris
- Ideal for use with aggregate or geotextile matting
- Ability to saddle over drainage piping
- Side knockouts for 4-way airflow



Cutaway view of Radon-T

PRICING

KIT	P/N	PRICE
Single Radon-T Kit	28353	
Contractor Pack (12 Kits)	28354	

KIT INCLUDES

- Radon-T Fitting
- 4 stakes for stabilization
- Cap to prevent debris entry
- Instruction guide
- 4 vent pipe labels

PIPE ACCESSORIES

ROOF FLASHINGS



Flexible Roof Boot



Kozy Kollar

PRICING & SPECIFICATIONS

ITEM	P/N	PIPE SIZE	BODY MATERIAL	PRICE
Flexible Roof Boot	76008-1	2" PVC	Weatherproof thermoplastic; reinforced base	
	76008-2	3" PVC		
	76008-3	4" PVC		
Kozy Kollar	76010-1	3" PVC	Innovative design; withstands 20 years of exposure. Install from inside; ideal for steep roof and winter conditions. Sealant included.	
	76010-2	4" PVC		

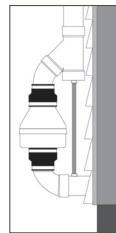
FAN GUARDS & CONDENSATE BYASSES



Fan Guard Kit



Universal Condensate Bypass Kit



Drill/Tap Combination

PRICING & SPECIFICATIONS

ITEM	P/N	DESCRIPTION	PRICE
Fan Guard 320	76040-1	Designed to prevent condensation, rain or melting ice from damaging the fan. Connects to schedule 40 PVC. Includes coupling, 2 fittings, 3' drain tube and 3' of tubing insulation	
Fan Guard 3440	76040-2		
Universal Condensate Bypass Kit	25030	Includes 3' of tubing, 3' of tubing insulation, 2 barbed fittings	
Drill/Tap Combination	28138	For easy installation (use with 3/8" drill or larger)	



TECHNICAL TIP: WHY INSTALL A BYPASS?

Install a condensate bypass on your exterior ASD systems to minimize potential fan damage by bypassing the flow of exhaust pipe condensation.

Call RadonAway® for more tips on this topic.

FIRE BARRIERS

PRICING & DESCRIPTION



Nelson Fire Barrier



STI SpecSeal



STI Smoke Sealant

ITEM	P/N	SIZE	DESCRIPTION	QTY/ CASE	UNIT PRICE	
					< CASE	CASE
Nelson Fire Barrier	76004-1	2"	<ul style="list-style-type: none"> One-step installation Built-in smoke seal 	24		
	76004-2	3"		10		
	76004-3	4"		8		
STI SpecSeal	76042-1	3"	<ul style="list-style-type: none"> Expands quickly (up to 60x) Safe contact with plastics Water-resistant Smoke sealant required 	6		
	76042-2	4"		6		
STI Smoke Sealant	68049	-	<ul style="list-style-type: none"> 10.1 oz tube Required with STI fire barriers Commercial-grade sealant Expands rapidly (up to 10x) Water resistant Safe - low VOCs, no solvents, non-halogenated 	12		

Items sold individually or in case quantities.

PVC CEMENT

PRICING & DESCRIPTION



ITEM	P/N	DESCRIPTION	QTY/ CASE	UNIT PRICE	
				< CASE	CASE
Gorilla PVC Cement	68034	16 oz; medium set, no primer required. Odorless, nontoxic, environmentally safe; non-staining; non-flammable	24		

DAMPERS & FLANGES

PRICING & DESCRIPTION



Damper



Wall Dress Flange

White Trim Plate

ITEM	P/N	SIZE	DESCRIPTION	PRICE
Damper	28080-1	3"	Round; includes damper, handle, washer and wingnut	
	28080-2	4"		
	28080-3	6"		
Wall Dress Flange	28046-1	3"	Precut PVC; covers wall penetrations	
	28046-2	4"		
White Trim Plate	79138-2	3"	White plastic; fits schedule 40 PVC; breakaway split allows installation after pipe placement	
	79138-1	4"		



Radon Professional's Pull-Out Fan Guide

Fan Selection Specifications and Guidelines

With Fan Replacement Guide

This handy 4-page guide is intended to make it easier for you to have RadonAway® fan specifications and our fan replacement chart at your fingertips where you need them, when you need them – on a job site, in your truck, at your desk, or anywhere else you might want to quickly check for fan specs or replacements.

As always, we are committed to providing you with not only the highest quality radon mitigation products but also information to help you provide expert, effective professional radon services.

[To remove this guide, firmly hold this 4-page section, then fold back the rest of the catalog and gently pull the guide from the staples.]





RP Series

Scan this code to see or order any RP fan at our e-commerce store.

Use RP fans for quiet operation, energy efficiency and high air flow in porous sub-slab or sub-membrane materials consisting of about 4 inches of clean, size 4-6 gravel.



XP/XR Series

Scan this code to see or order any XP/XR fan at our e-commerce store.

Use XP/XR fans for compact size, lower pressure and average flow in very porous sub-slab/sub-membrane materials consisting of 4 inches of clean, size 4-6 gravel.



GP Series

Scan this code to see or order any GP fan at our e-commerce store.

Use GP fans for versatility and a broad performance range in moderate to tight sub-slab/sub-membrane conditions. Ideal choice when multiple suction points are necessary.

MODEL	P/N	FAN DUCT DIAMETER	RRNC 2.0 RADON FAN TYPE	WATTS	MAX. PRESSURE "WC	RECOM. MAX OP. PRESSURE "WC*
RP140	23029-1	4"	RF1	15-21	0.8	0.7
RP145	23030-1	4"	RF1, RF2	41-72	2.1	1.7
RP260	23032-1	6"	RF2	50-75	1.6	1.5
RP265	23033-1	6"		91-129	2.3	2.2
RP380	28208	8"		95-152	2.3	2.0
XP151	23010-1	4"	RF1	45-60	1.4	1.3
XP201	23011-1	4"	RF1	45-66	1.8	1.7
XR261	23019-1	6"		67-117	1.7	1.6
GP201	23007-1	3"		40-60	2.0	1.8
GP301	23006-1	3"		55-90	2.6	2.4
GP401	23009-1	3"		60-110	3.4	3.0
GP501	23005-1	3"		70-140	4.2	3.8
SF180	28317	3" or 4"		53-71	2.1	1.7
GP500	23003-1	3"		70-130	4.3	-

	MODEL	P/N	FAN DUCT DIAMETER	WATTS	MAX. PRESSURE "WC	RECOM. MAX OP. PRESSURE "WC*	TYPICAL CFM vs. STATIC PRESSURE WC						FAN WEIGHT	SHIPPING WEIGHT
							0"	10"	15"	20"	25"	35"		
With Cord	HS2000	23004-1	3" in / 2" out	150-270	18	14	110	72	40	-	-	-	17	20
	HS3000	23004-2	3" in / 2" out	105-195	27	21	40	33	29	24	18	-	18	21
	HS5000	23004-3	3" in / 2" out	180-320	50	40	53	47	42	38	34	24	18	21
With Switch Box	HS2000E	23004-4	3" in / 2" out	150-270	18	14	110	72	40	-	-	-	17	20
	HS3000E	23004-5	3" in / 2" out	105-195	27	21	40	33	29	24	18	-	18	21
	HS5000E	23004-6	3" in / 2" out	180-320	50	40	53	47	42	38	34	24	18	21

ESTIMATE YOUR SYSTEM'S ENERGY USE WITH OUR FAN COST CALCULATOR AT RADONAWAY.COM/CALCULATOR

*NOTE: This chart is based on airflow through the ducting of the fan. Every time you reduce duct size, there is a 20% degradation of airflow. 4% drop in airflow for every 1000 feet alt.



SF180

Scan this code to see or order the SF180 fan at our e-commerce store.

Use the SF180 for its low-profile design and moderate to good air flow in porous sub-slab or sub-membrane conditions ranging from about 4 inches of clean, size 4-6 gravel to very loose soil.



GP500 Series

Scan this code to see or order the GP500 fan at our e-commerce store.

Use the GP500 in situations that require a high-performance box fan as an effective alternative to more commonly used inline tube fans. It can provide coverage up to 1000sf per slab penetration.



HS Series

Scan this code to see or order any HS fan at our e-commerce store.

Use HS fans in sand, clay or tight soil conditions when you need up to 25 times the suction of inline radon fans.

	TYPICAL CFM vs. STATIC PRESSURE WC									FAN WEIGHT (lbs)	SHIPPING WEIGHT (lbs)
	0"	.5"	1.0"	1.5"	2.0"	2.5"	3.0"	3.5"	4.0"		
	135	70	-	-	-	-	-	-	-	3.9	5
	166	126	82	41	3	-	-	-	-	5.5	7
	272	176	89	13	-	-	-	-	-	5.6	8
	334	247	176	116	52	-	-	-	-	6.5	9
	497	353	220	130	38	-	-	-	-	9.1	12
	150	115	69		-	-	-	-	-	4.9	6
	112	95	70	40	-	-	-	-	-	5	6
	217	149	87	27	-	-	-	-	-	5.7	8
	-	-	82	58	5	-	-	-	-	9.1	11
	-	-	92	77	45	10	-	-	-	9.8	12
	-	-	93	82	60	40	15	-	-	10	12
	-	-	95	87	80	70	57	30	10	10	12
	149	127	96	61	-	-	-	-	-	12.8	15
	-	-	88	80	74	65	54	28	14	18	20

**RRNC 2.0
ANSI/AARST Standard**

Reducing Radon in New Construction of 1 & 2 Family Dwellings and Townhouses

This chart displays the designated radon fan types recommended in the new standard.

*Radon Fan Types RF1 & RF2 minimum flow and pressure ratings are manufacturer specifications.

PIPE SIZE Nominal (I.D.)	TOTAL FOUNDATION AREA		
	Less than 1600 sq. feet	1600 to 2500 sq. feet	Greater than 2500 sq. feet
	Less than 149 sq. meters	149 to 232 sq. meters	Greater than 232 sq. meters
(3 inch) [7.6 cm]	Use Radon Fan Type: RF1 RF1 Minimum rating:* 50 cfm @ 0.5" WC [85m³/hr @ 125 Pa]	Use Radon Fan Type: RF2 RF2 Minimum rating:* 75 cfm @ 1.0" WC [127m³/hr @ 250 Pa]	Radon fan to be sized by a certified/licensed radon mitigator.
(4 inch) [10 cm]	Use Radon Fan Type: RF1 RF1 Minimum rating:* 50 cfm @ 0.5" WC [85m³/hr @ 125 Pa]	Use Radon Fan Type: RF1 RF1 Minimum rating:* 50 cfm @ 0.5" WC [85m³/hr @ 125 Pa]	Radon fan to be sized by a certified/licensed radon mitigator.



Need a replacement for other brands? We've got you covered.

The RadonAway® replacement fans listed below provide superior performance and durability. In many cases, they use the same flexible pipe couplings and require little or no change to the system piping. This guide is intended to help you select a replacement fan for most brands. Included are many of the older fans with their current replacements.

Don't see the fan you need to replace?
Give us a call and we will gladly help
you find the best replacement fan for
your requirements.



Scan this QR Code
to download our
contact information
directly to your
smart phone.

	ORIGINALLY INSTALLED FAN	RadonAway® REPLACEMENT FAN
Fantech	R100, F100, FR100, HP2133	RP140
	R150, F150, FR150	XR261 or RP260
	R160, F160, FR160	RP260 or RP265
	R175, F175, FR175	RP265
	HP190, HP2190	RP145
	HP190SL	SF180
	HP220	RP265
AMG/FESTA	Maverick	RP145, XP151, or XP201
	Hawk	RP260 or XR261
	Prowler	GP301
	Legend	RP265
	Eagle	GP401
	Goliath	RP260 or GP501**
	Force	RP260 or GP501**
Kanalfakt/ FanAmerica	T1 Turbo 5 (Fiberglass)	XP201* or XP151*
	T2 Turbo 6 (Fiberglass)	XR261 or RP260
	K4 (Metal Kanalfakt)	RP140*
	K4XL (Metal Kanalfakt)	XP201* or XP151*
	K6 (Metal Kanalfakt)	XR261 or RP260
Rosenberg	R100	RP140*
	R150	XR261 or RP260

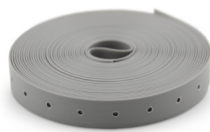
* Slightly different duct diameter requires different flexible couplings. ** Depends on site needs: Airflow vs. static pressure

PIPE ACCESSORIES

PIPE SUPPORT/HANGERS



2-Hole Strap



Plastic Hanger Strap



Pipe Hanger



HangerLok®



Hangs Tough™ J-Style Supports

PRICING & SPECIFICATIONS

TEM	P/N	SIZE	DESCRIPTION	QTY/ CASE	UNIT PRICE	
					< CASE	> CASE
2-Hole Strap	76058-1	3"	Galvanized	25		
	76058-2	4"		25		
Plastic Hanger Strap	67070-1	¾" x 25'	Polypropylene with ⅛" holes	N/A		
	67070-2	¾" x 100'		N/A		
Pipe Hanger	76059-1	2"	<ul style="list-style-type: none"> • Bolt included • Zinc plated 	25		
	76059-2	3"		25		
	76059-3	4"		25		
HangerLok®	76075	3"	RadonAway® Exclusive <ul style="list-style-type: none"> • White to match system pipe • Adjusts to hold pipe securely • Thermoplastic 	25		
	76076	4"		25		
Hangs Tuff™ J-Style Supports	76060-1	2"	Use with schedule 40	50		
	76061-1	3"	Use with schedule 30	50		
	76060-2	3"	Use with schedule 40	50		
	76060-3	4"	Use with schedule 40	25		

Items sold individually or in case quantities.



WHY USE HANGERLOK® PIPE HANGERS/CLAMPS?

Our HangerLok® pipe hangers are better looking – and just plain better – than all the rest. Available for radon professionals exclusively from RadonAway®, they are:

- White, colored to our specifications to match the PVC pipe and enhance system aesthetics
- Adjustable, to hold the pipe more securely to the house, allowing less movement and vibration
- An effortless upsell on those system installations where looks count

CAPS, GUARDS & MUFFLERS



Vent Cap



Pipe Guard



HS Muffler



3" Muffler



Offset Downspout Adapter

PRICING & DESCRIPTION

ITEM	P/N	DESCRIPTION	PRICE
Vent Cap	76001	3" Schedule 40	
	76009	4" Schedule 20	
	76002	4" Schedule 40	
Pipe Guard	76041-3	3" Schedule 20 varmint guard	
	76041-4	4" Schedule 20 varmint guard	
	76041-1	3" Schedule 40 varmint guard	
	76041-2	4" Schedule 40 varmint guard	
Muffler	24002	2" Inline Schedule 40, 11.5" L, foam lined	
	24003	3" Schedule 40, 13.75" L, foam lined	
	24007	4" Schedule 40, 16" L, foam lined	
Offset Downspout Adapter	79158	3" x 4" to 4" Schedule 20	



TECH TIP: WHY USE A MUFFLER?

We all know about stack noise – the sound from air flow coming out of the pipe. A RadonAway® radon fan, when installed properly, operates with little or no noticeable noise to the building occupants. The velocity of the outgoing air should be considered in the overall system design. In some instances, the use of a RadonAway® foam-lined muffler is recommended. Install the muffler assembly in the selected location, normally at the end of the vent pipe and solvent-weld all connections.

PIPE ACCESSORIES

VIBRATION/NOISE REDUCTION

COMING SOON!

Before RadonAway® fans are built, each motor is tested for noise and vibration. Once they are assembled, they are performance tested again to ensure that they are as quiet and vibration free as possible. Any vibration that may occur after installation is often the result of the installation and not the fan itself.

To help eliminate the potential for vibration and its accompanying noise, we have identified quality products which match all of our current pipe clamp offerings and will help reduce system vibration. We are still waiting for some of these products to arrive at our warehouse, and we will announce their introduction in a few months. Here are some of the anti-vibration products you can expect to see.



ITEM	DESCRIPTION
Pipe Hanger Dampener	These 1/4" thick neoprene dampeners are custom cut to an exact fit for both of our exclusive 3" and 4" white HangerLok® pipe clamps. They are pre-cut for center-hole mounting and assist in isolating the HangerLok® and pipe from the building wall.
Pipe Hanger Dampener Strip	These sponge rubber dampener strips have adhesive on one side to make installation easy. The 1" wide strip was carefully selected for use on both 3" and 4" two-hole straps, providing a vibration-absorbing layer between the system pipe and the building wall. The 1/8" wide strip is best for use with "J" hangers to isolate the hanger from the building attachment point.
Rubber Pipe Clamp Grommet	These rubber grommets provide a vibration-absorbing buffer between single-hole 3" and 4" pipe clamps and the metal screw used for attachment to the building wall.
2-Hole Strap Rubber Grommet	These SBR rubber grommets are used to provide a vibration-absorbing buffer between two-hole straps and metal screws used for attachment to the building wall. These grommets should be used in conjunction with the 1" wide sponge rubber dampener strip for maximizing pipe isolation.
Center-Hole Bushing	For use with 3" and 4" HangerLok® pipe clamps, these center-hole rubber bushings provide a vibration-absorbing buffer between the HangerLok® and the metal screw used for attachment to the building wall. These bushings are used when mounting a HangerLok® using only the center hole. To be used in conjunction with the pipe hanger dampeners.
Offset-Hole Bushing	For use with 3" and 4" HangerLok® pipe clamps, these rubber bushings have a center hole and provide a vibration-absorbing buffer between the HangerLok® and metal screws used for attachment to the building wall. HangerLok® requires that two of these bushings be used when mounting a HangerLok® using the off-set holes. To be used in conjunction with the pipe hanger dampeners.

OUTDOOR FAN COVERS



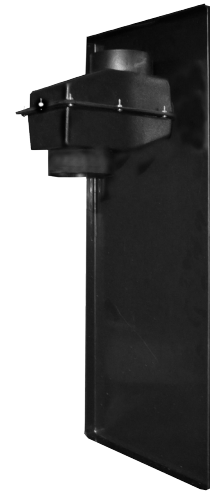
Black Fan Cover



White Fan Cover



Black Baseplate



Baseplate & Transition Box

PRICING & DESCRIPTION

ITEM	P/N	COLOR	DESCRIPTION	SIZE	PRICE*
Complete Fan Cover Kit	28043	White	<ul style="list-style-type: none"> Complete kit includes baseplate, transition box and fan cover Fits all RadonAway® RP, XP and GP fans 	31"H x 13"W x 13"D	
	28388	Black			
Fan Cover with Baseplate	28387	White	<ul style="list-style-type: none"> Kit includes baseplate, and fan cover Fits all RadonAway® RP, XP and GP fans 		
	28389	Black			
Fan Cover Only	28043-2	White	<ul style="list-style-type: none"> 4" Cutout Fits all RadonAway® RP, XP and GP fans Material: Durable, paintable ABS plastic 		
	28043-1	Black			
	28043-4	Black		<ul style="list-style-type: none"> No Cutout Fits all RadonAway® RP, XP and GP fans Material: Durable, paintable ABS plastic 	
Baseplate Only	28043-3	Black	Durable plastic base for fan cover	31"H x 13"W	
Baseplate and Transition Box	28043-5	Black	Durable plastic base for fan cover with fan-to-pipe adapter box	31"H x 13"W x 13" D	

*Additional Shipping charges apply. Call for details.

TECHNICAL TIP: TRANSITION BOX

You can create a clean, attractive look for exterior-mounted fans with a baseplate, transition box and fan cover. The easy-to-install transition box is used to adapt the fan to the PVC pipe and allows the pipe to run flush with the house. Fits all RadonAway® RP, XP and GP fans.

Call RadonAway® for more tips on this topic.

RadonAway® GP Series fan mounted with baseplate and transition box (P/N 28043-5)



RADON SYSTEM ACCESSORIES

MANOMETERS



Mark II Series



U-Tube Manometer



Magnehelic® Manometer



Red Gauge Oil

PRICING & DESCRIPTION

ITEM	P/N	DESCRIPTION	READS "WC	PRICE
Mark II Series 25 Slant	50005-1	Compatible with GP201, GP301, XP, XR, RP Series and Fantech	0-3	
Dwyer U-tube Manometer	50002-1	Compatible with RP, GP, XP, XR Series and Fantech (or when stacking fans)	0-8	
Magnehelic® Manometer	50001-2	Compatible with HS Series; high accuracy (within 2%); simple, frictionless Magnehelic movement; easy-to-read dial	0-50	
	50014	Exterior use	0-5	
Dwyer Red Gauge Oil	68030-1	¾ oz dispenser bottle	-	

MANOMETER BY RADONAWAY®

DETAILS

- Reads 0-4.5" WC
- Non-toxic fluid
- Adjustable zero
- Molded scale curved to fit system pipe

Includes: Hangable bag with homeowner brochure and all system labels to help you comply with new RRNC 2.0 "Model Code" Standard (see p. 63) and provide important system information.



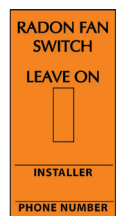
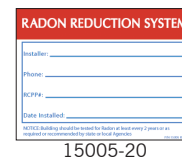
ITEM	COLOR	P/N	QTY / CASE	UNIT PRICE		
				< CASE	CASE	2+ CASES ¹
Easy Read U-tube Manometer	Blue	50017	50			
	Red	50018	50			
Replacement Oil ² (½ oz.)	Blue	20011	N/A		-	-
	Red	20014	N/A		-	-

¹Must be purchased in case quantity. ²One bottle of the refill fluid will refill 4 ½ U-Tube Manometers.

RADON MITIGATION SYSTEM LABELS

PRICING & DESCRIPTION

ITEM	P/N	SIZE	QTY/PKG	PRICE
Radon Reduction Central System	15005-20	4" x 2 7/8"	20	
Radon Reduction Central System Component	15006-50	3 1/4" x 1"	50	
Radon Fan Switch	28340	2" x 4"	20	
Radon Fan Circuit	28341	2" x 1/2"	20	



28340

RADON SYSTEM ACCESSORIES

SYSTEM ALARMS



Checkpoint IIA



Checkpoint IIAR (remote)



Pressure Switch

PRICING & DESCRIPTION

ITEM	P/N	DESCRIPTION	PRICE
Checkpoint IIA Mitigation System Monitor/Alarm	28001-2	Audible alarm; green and red LED lights; factory preset to activate at .25"WC vacuum pressure; low voltage	
Checkpoint IIAR Mitigation System Monitor with Remote Alarm	28001-4	Provides all the features of the Checkpoint II plus can be wired to a remote location where the homeowner is more likely to hear an alarm (50' of wire included).	
Pressure Switch	73023	Suitable to activate light or alarm for monitoring fan operation; activates at .25"WC; UL/CSA recognized (wire and probe not included)	

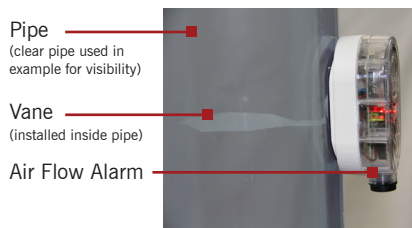
Need a more sensitive alarm? 0.10 alarm available. Call for details.

RADONAWAY® AIR FLOW ALARM



RadonAway's battery-powered air flow alarm monitors radon system operation. It mounts directly onto the system pipe to alert users of a low air flow condition. A thin, field-trimmable vane installed within the pipe operates in low air flow down to 10 CFM in a 3" pipe and 15 CFM in a 4" pipe. An audible buzzer alternates with bright, flashing red LED light when there is no air flow in the pipe. A yellow LED light indicates a low battery.

- Easy installation (indoor use only)
- Audible alarm
- Visual alarm (red LED light)
- Battery operated
- Low battery warning light (yellow LED light)
- For use on 3" or 4" pipe



PRICING & DESCRIPTION

ITEM	P/N	DESCRIPTION	PRICE
RadonAway® Air Flow Alarm	28421	Includes: RadonAway® Air Flow Alarm, battery, trimmable vane and installation instructions	

RADON GAS DETECTOR



PRICING & DESCRIPTION

ITEM	P/N	DESCRIPTION	PRICE
Pro Series 3 Radon Gas Detector	28221	Numeric LED indicator, .1-999.9 pCi/L; displays updates hourly; daily self-test of electronics and sensor	

RADON SYSTEM ACCESSORIES

ELECTRICAL ACCESSORIES



Fan Speed Control



Vari-Speed



Exterior Switch Kit



Code Keeper



Lockable Plastic Cover

PRICING & SPECIFICATIONS

ITEM	P/N	DESCRIPTION	PRICE
Fan Speed Control	73009	On / Off rotary operation, 5 amp (1/6 HP) max 120VAC	
Vari-Speed	SC-15*	Fan Speed Control with cover	
6' Power Cord Kit	27005	18 ga 3-prong plug and bushing	
8' Power Cord Kit	27004		
6' Power Cord	99030-2	18 ga 3-prong plug	
8' Power Cord	99030-1		
Cord Connector	FCC-01*	Water tight connector	
Flexible Conduit	98038	1/2"; 25' Coil	
	98039	1/2"; 100' Coil	
Flexible Conduit Cutter	CC-100*	Cut flexible conduit fast and smooth.	
Liquid Tight Conduit Fitting	98040	1/2"; Straight	
	98041	1/2"; 90 degree elbow	
Conduit Clamp (box of 100)	CC-12*	Plastic, use to secure 1/2" flexible conduit.	
Wire Nuts (box of 100)	70046	Works with most common wire sizes, yellow and red.	
Exterior Switch Kit	28328	For use with SF180 radon fan. Includes single gang, one-socket exterior box; 3/4" slip x 1/2" FPT adapter; two 1/2" MPT water-tight cord bushings; 1/2" PVC nut; switch; exterior switch cover; 30" SJOW Cord	
Single Pole Switch	73001	Basic on/off switch	
	28378 (box of 10)		
Plastic Electrical Box	19025	3 hole, single gang	
Metal Cover	PC-04*	Plain cover, single gang with screws and gasket	
Metal Box	MB-24*	3 hole box, single gang	
	MB-44*	4 hole box, single gang	
Lockable Plastic Switch Cover	19026	Lockable cover with screws and gasket (lock not included)	
Code Keeper	19030	Secures fan cord. Mounts on any standard (single gang) electrical box indoor or outdoor. Accepts standard or GFI receptacle. Universal hinge, clear cover with tabs for padlock to prevent the fan from being unplugged.	

*Ships from Indiana.

NOTE: All electrical work should be performed in compliance with appropriate codes.

STANDARD & CHISEL BITS



SPLINE



SDS-PLUS

SPLINE: PRICING & DESCRIPTIONS

ITEM	P/N	DESCRIPTION	PRICE
1 1/8" x 20"	28282-18	20" Solid carbide-tipped	

SDS-PLUS: PRICING & DESCRIPTIONS

ITEM	P/N	DESCRIPTION	PRICE
3/4" x 12"	28282-26	12" Solid carbide-tipped	
1" x 12"	28282-27		
Point Chisel	28282-30	12" Chisel bits for chipping and breaking concrete	

NOTE: Standard and chisel bit inventories limited. Order while supplies last.



Point Chisel

HOLE SAWS, BITS & BLADES BY BLUE-MOL®



Blu-Mol® Hole Saws



Center Bit (Arbor)



Blades

HOLE SAWS: PRICING & DESCRIPTIONS

ITEM	P/N	DESCRIPTION	PRICE
3 1/4"	28282-31	For 3" schedule 20-30 pipe	
3 1/2"	28282-32	For 3" schedule 40 pipe	
3 5/8"	28282-33	For 3" schedule 40 pipe	
4 1/4"	28282-34	For 4" schedule 20-30 pipe	
4 1/2"	28282-35	For 4" schedule 40 pipe	
4 3/4"	28313-5	For 4" schedule 40 pipe	

BLADES: PRICING & DESCRIPTIONS

ITEM	P/N	DESCRIPTION	PRICE
6" x 14TPI	28313-1	<ul style="list-style-type: none"> • Blu-Mol® • Bi-metal • 1/2" universal shank, fits all standard 1/2" shank reciprocating saws • 10-packs 	Ideal for PVC & metal
9" x 14TPI	28313-2		
6" x 6TPI	28313-3		Ideal for wood
9" x 6TPI	28313-4		

BIG SAVINGS! Compare our prices to big box stores.

CENTER BIT: PRICING & DESCRIPTIONS

ITEM	P/N	DESCRIPTION	PRICE
Center Bit (Arbor)	28282-37	3/8" hex shank	

WHY USE BLU-MOL®

Blu-Mol® hole saws and accessories represent the contractor's choice for a workhorse product line. Combining value and product integrity, they are designed and built to provide aggressive cutting and boring.



BucketVac® Wet/Dry Contractor Vacuum



Caulk Saver



Drill Mate



Gorilla PVC Cement



Booties



Flexible Conduit Cutter



Dirt Auger



20" PVC Saw



12" PVC Saw



Barrier Knife



Drill Tap

MISCELLANEOUS TOOLS & EQUIPMENT: PRICING & DESCRIPTIONS

ITEM	P/N	DESCRIPTION	PRICE
BucketVac® Wet/Dry Contractor Vacuum	28362	Turns a standard 5-gal bucket into a powerful wet/dry vacuum. Industrial vacuum power and performance. Wet pickup rate – 30GPM; dry pickup - 100CFM Kit includes: 5 gal bucket; crevice tool; brush tool; extension wands; extra wide, extra long, crushproof, 2" super flex hose and more	
BucketVac® Filters	80001	Replacement filters - 6/pack	
Caulk Saver	68085	Creates air-tight seal; fits most caulking tubes; center plunger pulls out to clean away any dried material; heavy plastic, durable design	
Drill-Mate* (10oz tube)	PR-1000	Turns your drill into a powerful, easy to operate, industrial caulking gun. Attaches to any cordless or variable speed AC drills; no air lines required; delivers a controlled, smooth, continuous bead; 2-year warranty; Made in the USA	
Drill-Mate* (30oz tube)	PR-3000		
Gorilla PVC Cement	68034	16 oz; medium set, no primer required. (Case quantity available - p. 32)	
Booties	75000	5 pairs; latex free; extra large size; non-skid	
Flexible Conduit Cutter*	CC-100	Cuts flexible conduit quickly and smoothly	
Dirt Auger	28371	4"D x 26"L - Cleans dirt from deep into sub-slab holes. Fits 1/2" chuck.	
20" PVC Saw	28373	10 teeth per inch; high quality, hardened steel	
12" PVC Saw	28372	13 teeth per inch; teeth on nose for tight spots; high quality, hardened steel.	
Barrier Knife	28374	Durable plastic blade storage in the handle; 3 blades included	
Barrier Knife Blades	28375	100 replacement blades	
Drill/Tap Combination	28138	For easy installation (use with 3/8" drill or larger)	

*Ships from Indiana.

RADON IN WATER REMOVAL



Aeration has long been considered the Best Available Technology for reducing radon in drinking water. One of the reasons is that, unlike GAC removal, the gas is vented safely into the air, so there is no radioactive waste left behind.

The AIRRaider™ series of diffused bubble water aeration systems manufactured by RadonAway® have long set the standard for effective removal of radon and VOCs from drinking water. We are pleased to announce that we have acquired and are the sole manufacturer of the CLEARADON® 3311, which expands our water aeration capabilities further. Now we can offer our customers the choice of three different aeration processes to suit their waterborne radon reduction needs.

RADONAWAY AERATION EQUIPMENT FEATURES

- **No Sweating**
Double-wall foam-insulated tank will not sweat.
Result: No messy puddles. No increased dampness.
- **Compact Size**
Takes up the smallest total area of any residential aeration system with the smallest possible vent line.
Result: Better aesthetics while effectively venting radon gas.
- **2-Year Warranty**
- **Proven Effective**
All RadonAway® radon in water systems have been field-tested and lab-tested for radon reduction effectiveness.
Result: Removes up to 99+% of radon (see below).
- **Remote Air Intake (AIRRaider™ only)**
AIRRaider™ systems can draw clean, filtered air from other locations with a 1" or 1 1/4" air intake line.
Result: Minimized backdrafting and reduced potential for contamination from airborne pollutants.

AERATION PROCESSES

All aeration equipment manufactured by RadonAway® employ methods that force large volumes of air through water. The resulting gases, including radon and VOCs, are then vented above the roof.



Diffused Bubble

RadonAway's AIRRaider™ 433, introduced to the radon industry more than 20 years ago, uses an exclusive multi-stage diffused bubble aeration process that produces a radon reduction rate of 99+%. In this method of aeration, the AIRRaider tank is divided into four chambers. Water is aerated by the forced introduction of filtered air through diffusers, creating fine bubbles; this process occurs in three separate chambers before reaching the fourth chamber, where it is ready for use. All AIRRaider 433 models, including the 433-S series with submersible motors, employ this process of aeration.



Spray/Diffused Bubble

RadonAway® 321 AIRRaider™ models use both spray and diffused bubble aeration to remove up to 95+% of radon from water. In this process, water is sprayed into a chamber via a spiral spray nozzle where filtered air is forced into the water column to accomplish the first stage of aeration; then the water is again aerated by a diffuser introducing additional filtered air. The water in the tank is then ready for consumption. The 321 is now also available with submersible pump (see 321-S50X, p. 48).



Shallow Tray

RadonAway's recently acquired CLEARADON® 3311 employs an aeration method where water is sprayed into a perforated, spiralled tray chamber, while filtered air is forced from below the tray through the tray perforations, aerating the water. After thorough aeration, the water is allowed to flow into the bottom chamber of the CLEARADON®, where it is ready for use. Reduces up to 99+% of radon.

RADON IN WATER REMOVAL



433 Series

Proven Effective

The AIRraider 433 models successfully and dependably remove radon and VOCs from well water through a patented multi-stage aeration method. For over 20 years they have provided the standard by which other radon in water aeration equipment is measured. Provide up to 99+% radon reduction.

Tank Capacity:

44 gallons

Tank Dimensions:

35"H x 34.25"W x 22"L



433-S Series

Submersible Pump

The 433-S series takes the 433 to a new level. With new engineering that includes an integrated internal repressurization pump, S series models offer easy installation, a smaller footprint and quieter operation. Provide up to 99+% radon reduction.

Tank Capacity:

44 gallons

Tank Dimensions:

35"H x 34.25"W x 22"L



321 & 321-S50X

Value Priced

The AIRraider 321 models combine spray and diffused bubble aeration for the best quality and results at a value price. Developed for easy installation, they are ideal when the more powerful 433 is not required. The new 321-S50X includes an integrated internal repressurization pump. Provide up to 95+% radon reduction.

Tank Capacity:

44 gallons

Tank Dimensions:

35"H x 34.25"W x 22"L



Clearadon 3311

Energy Efficient

The CLEARADON® fits conveniently into your current water system (in the basement or utility room). Designed and manufactured for years of trouble-free operation, this powerful, yet energy efficient, system can provide up to 99+% radon reduction.

Tank Capacity:

15 gallons

Tank Dimensions:

36" H x 38" D



PERFORMANCE & TECHNICAL INFORMATION



AIRRaider™ 321



AIRRaider™ 433 & 433-1



AIRRaider™ 433-S



CLEARADON® 3311

MODEL	AIRRaider 321	AIRRaider 321-S50X	AIRRaider 433 (115V)	AIRRaider 433-1 (115V)	AIRRaider 433-1TF	AIRRaider 433-S50	AIRRaider 433-S50X	CLEARADON 3311
P/N	28424	28425	28426	28427	28338	28428	28429	28430
SYSTEM VOLTAGE	115V	115 V	115V	115V	115V	115V		115V
BLOWER	0.11 hp Regenerative Blower 1.2 MaxAmp	0.11 hp Regenerative Blower 1.2 MaxAmp	0.5 hp Regenerative Blower 5.0 MaxAmp	0.5 hp Regenerative Blower 5.0 MaxAmp	0.5 hp Regenerative Blower 5.0 MaxAmp	0.5 hp Regenerative Blower 5.0 Max Amp		0.5 hp Regenerative Blower 15.0 MaxAmp
REPRESSURIZATION PUMP	Sold Separately	½ hp Sta-Rite Submersible 9.0 MaxAmp Built-In	Sold Separately	Sold Separately	N/A	½ hp Sta-Rite Submersible 9.0 MaxAmp Built-In		Sold Separately
PLUMBING CONNECTION	¾" Quick Connect	¾" Quick Connect	¾" Quick Connect	1" Quick Connect	¾" Inlet ¼" FNPT Outlet	¾" Quick Connect		¾" Barb In 1" Barb Out
FLOW RATE ¹	Up to 10 GPM ³	Up to 16 GPM ³ @ 40 PSI	Up to 15 GPM ³	Up to 20 GPM ³	Up to 20 GPM ³	Up to 16 GPM ³ @ 40 PSI		6 GPM up to 9 GPM ³
PSI RANGE ²	PSIs Vary	40-60 PSI	PSIs Vary	PSIs Vary	N/A	40-60 PSI		PSIs Vary
RADON REDUCTION ⁴	Up to 95%+	Up to 95%+	Up to 99%+	Up to 99%+	Up to 99%+	Up to 99%+		Up to 99%+
TANK DIMENSIONS	35"H x 34.25"W x 22"L	35"H x 34.25"W x 22"L	35"H x 34.25"W x 22"L	35"H x 34.25"W x 22"L	35"H x 34.25"W x 22"L	35"H x 34.25"W x 22"L		36" H x 38" Diam
REPRESSURIZATION TANK <i>Repressurization Tank Sold Separately</i>	20 Gal. Min. Recommended	20 Gal. Min.	20 Gal. Min. Recommended	20 Gal. Min. Recommended	N/A	5 Gal. Min.	20 Gal. Min.	20 Gal. Min. Recommended

1 Flow rate out of system must be balanced to be less than flow rate into system.

2 Range may vary slightly.

3 GPM dependent upon repressurization selection. Higher flow rates will require proper sizing. Please call for sizing and technical assistance.

4 Site-specific characteristics and system implementation may affect performance.

RADON IN WATER REMOVAL

PRICING & DESCRIPTIONS

ITEM	P/N	VOLTAGE	DESCRIPTION	PRICE
AIRaider 321	28424	115V	Spray/diffused bubble aeration system with adjustable aeration timer. Includes UL-Listed control panel, repressurization pump wire, mounted solenoid valves, 3/4" Quick Connect plumbing connection, 2" x 3" flexible coupling. Bypass <u>not</u> included. Pump and tank sold separately.	
AIRaider 321-S50X	28425	115V	Spray/diffused bubble aeration system with submersible 1/2 hp integrated internal repressurization pump controlled by standard Square D pressure switch (40-60 psi range), adjustable aeration timer. Includes UL-Listed control panel, mounted solenoid valves, 3/4" Quick Connect plumbing connection, 2" x 3" flexible coupling. Bypass <u>not</u> included. Tank (20 gal minimum recommended) sold separately.	
AIRaider 433	28426	115V	Multi-stage diffused bubble aeration system with adjustable aeration timer. Includes UL-Listed control panel, repressurization pump wire, mounted solenoid valves, 3/4" Quick Connect plumbing connection, 2" x 3" flexible coupling. Bypass <u>not</u> included. Pump and tank sold separately.	
AIRaider 433-1	28427	115V	Multi-stage diffused bubble aeration with adjustable aeration timer. Includes UL-Listed control panel, repressurization pump wire, mounted solenoid valves, 1" Quick Connect plumbing connection, 2" x 3" flexible coupling. Bypass <u>not</u> included. Pump and tank sold separately.	
AIRaider 433-1TF	28338	115V	Multi-stage diffused bubble aeration system with UL-Listed control panel. Designed for installation with atmospheric storage. Flow-through, gravity-fed system includes UL-Listed control panel, adjustable aeration timer, repressurization pump wire, fused circuitry, 1" Quick Connect plumbing connection, and 2" x 3" flexible coupling.	
AIRaider 433-S50	28428	115V	Multi-stage diffused bubble aeration system with submersible 1/2 hp integrated internal repressurization pump controlled by 50 psi pressure regulator and standard Square D pressure switch (40-60 psi range), adjustable aeration timer. Includes UL-Listed control panel, built-in 3/4" solenoid valves and attached 3 ball valve bypass, 3/4" Quick Connect plumbing connection, 2" x 3" flexible coupling. Tank (5 gal minimum required) sold separately.	
AIRaider 433-S50X	28429	115V	Multi-stage diffused bubble aeration system with submersible 1/2 hp pump controlled by standard Square D pressure switch (40-60 psi range), adjustable aeration timer. Includes UL-Listed control panel, mounted solenoid valves, 3/4" Quick Connect plumbing connection, 2" x 3" flexible coupling. Bypass <u>not</u> included. Tank (20 gal minimum recommended) sold separately.	
CLEARADON 3311	28430	115V	Shallow tray aeration system with UL-Listed control panel. Includes 3/4" solenoids, 3/4" hose barb in/1" hose barb out plumbing connection. Bypass not included. Pump and tank sold separately.	

NEW!

NEW!

Site specific characteristics and system implementation may affect radon reduction.
 Repressurization pumps and bypass assemblies sold separately (see p. 50).
 FOB Ward Hill, MA at cost; residential deliveries additional.

RADON IN WATER REMOVAL

ACCESSORIES & REPLACEMENT PARTS

Additional parts and accessories available. Call for details.



PRICING & DESCRIPTIONS

ITEM	P/N	SIZE	DESCRIPTION	PRICE
Water Hammer Arrester	76068	1/2"	Hydra-Rester®: Compact size; installs upright, horizontally, or angled; sealed wall installation	
	76043	3/4"		
	76044	1"		
Pump / Wall Mounting Bracket	25031	-	Fits any pump. Recommended for use with Grundfos.	
FloodStop™	28276	3/4"	Motorized point-of-leak detection, ball valve automatic shut-off system that prevents potential overflows if debris clogs a valve	
	28329	1"		
	28277	1 1/4"		
Air Filter Element	28195-1	-	Replacement element 14P for 201, 211, 321	
	28195-2	-	Replacement element 18P for 433, EZ ⁹⁵	
	28195-3	-	Replacement element 848 for inline, AIRRaider™	
	28391	-	Replacement element 234P for CLEARADON®	
Solenoid Valve	98046	3/4"	Polymer, electro-mechanical water control valve for 321, CLEARADON®	
	98050	3/4"	Stainless Steel electro-mechanical water control valve	
	98043	1"		
Lid Gasket	66100	-	Replacement gasket for CLEARADON®	
	17172	-	Replacement gasket for 321, 433 Series	
	13153	-	Replacement gasket for EZ ⁹⁵ , aeration chamber	
	13121	-	Replacement gasket for EZ ⁹⁵ , outer cover	
Hose	78028-1	3/4"	Braided PVC hose approved for "food/beverage" (Price is per foot)	
	78028-2	1"		
Bulkhead Fitting	79062-1	1/2"	Tank fitting, rubber O-ring gasketed fitting (for AIRRaider™)	
	79062-3	1"		
	79174-1	1/2"	Tank fitting, rubber O-ring gasketed fitting (for CLEARADON®)	
	79174-2	3/4"		
	79174-3	1"		
Float Switches	73036-1	-	On/off differential 3 1/2" / 90° (Black)	
	73036-2	-	On/off differential 1 1/4" / 45° (Blue)	
	73056	-	Vertical float switch for EZ ⁹⁵ on/off	
	73050	-	Low water pump float switch 3 1/2" / 45	
	73060	-	Replacement for CLEARADON®	
Inline Filter-Silencer	28171-3	1 3/4"	For remote air intake	

RADON IN WATER REMOVAL

REPRESSURIZATION OPTIONS



Goulds 1/2 hp
Submersible Pump



Grundfos
1 hp Pump



20 Gallon
Tank



2.1 Gallon
Tank



5 Gallon
Tank

PRICING & DESCRIPTIONS

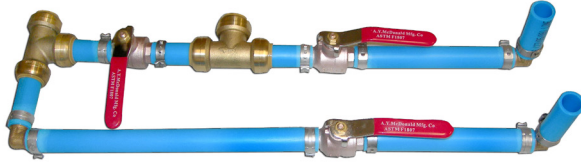
ITEM	P/N	VOLTAGE	DESCRIPTION	PRICE
Grundfos 1 hp Pump	51108	115	MQ3-45 self-priming, multi-stage jet pump <i>Note: 30-month manufacturer warranty from date of manufacture or 24 months from installation date.</i>	
	51109	230		
Goulds 1 hp Pump & Tank Kit	25018	115	J10S jet pump, M-4 low pressure cut-off switch, WR60-OLC well tank, and pump mounting bracket*	
	25022	230		
Goulds 1/2 hp Pump & Tank Kit	25017	115	J10S jet pump, M-4 low pressure cut-off switch, WR60-OLC well tank, and pump mounting bracket*	
	25021	230		
Goulds 1/2 hp Submersible Pump	28301	115	Replacement pump for AIRaider™ 433-S50 and EZ ⁹⁵ manufactured after April 1, 2013. Stainless steel, 5 gpm	
Sta-Rite 1/2 hp Submersible Pump	28347	115	Replacement pump for AIRaider™ 433-S50, 433-S50X, 321-S50X and EZ ⁹⁵ manufactured after 4/1/2013	
20 Gallon Expansion Tank	51154	-	Minimum size expansion tank required for use with the AIRaider™ 433-S50X and 321-S50X. Drawdown (before pump cycles on) is 5.9 gal with a 40/60 pressure switch, and 6.8 gal with a 30/50 pressure switch. WR60-OLC well tank.	
2.1 Gallon Bladder Tank	51105	-	2.1 gallon expansion tank used for surge suppression and/or pressure regulation. For use with AIRaider 433 series, 433-S50, and EZ ⁹⁵ manufactured prior to April 1, 2013.	
5 Gallon Bladder Tank	51155	-	Expansion tank for use with AIRaider™ 433-S50 and EZ ⁹⁵ manufactured after April 1, 2013	
Mounting Bracket for 5 Gallon Tank	28379	-	Heavy-gauge stainless steel bracket designed and engineered by RadonAway specifically to create a secure wall-mount for 5 gal bladder tank. Recommended for use with AIRaider 433-S50.	

NEW!

ADDITIONAL DETAILS

- Not required for 433-S models.
- Call for a full list of AIRaider and CLEARADON® products and accessories.

BYPASS ASSEMBLY OPTION



Pex/Sharkbite
Bypass Assembly



Clack Bypass with
Sharkbite Connectors



Clack Bypass with
Sweat Connectors



Clack Bypass
with Adapters



Clack Sharkbite
Connector Set



Clack Sweat
Connector Set

PRICING & DESCRIPTIONS

ITEM	P/N	PLUMBING CONNECTION	DESCRIPTION	PRICE
Pex/Sharkbite Bypass Assembly	28311	3/4"	For EZ ⁹⁵ : Two-position bypass assembly includes 3/4" Pex brass ball valves and elbows, sharkbite 3/4" x 3/4" x 3/4" tees, crimp rings and tubing for dependable long-term operation, easy installation and service.	
Clack Bypass with Sharkbite Connectors	28309	3/4"	3/4" Clack bypass valves, inline adapter fittings and sharkbite connectors for easy installation and service.	
Clack Bypass with Sweat Connectors	28310	3/4"	3/4" Clack bypass valves, inline adapter fittings and sweat connectors for easy installation and service.	
Clack Bypass with Adapters	28312	-	Two-position Clack bypass provides easy-to-operate "run" and "bypass" modes.	
Clack Sharkbite Connector Set	79123	3/4"	For use when connecting bypass to any 3/4" piping.	
Clack Sweat Connector Set	79126	3/4"	For use when connecting bypass to 3/4" copper pipe.	

Every item in this catalog, from our most powerful radon fan to the smallest accessory, has been included because of its ability to contribute in some manner to the improvement of indoor air quality. Major sections focus on radon (including new construction), soil gas, and VOC mitigation; crawlspace encapsulation; and moisture control. Many Green Building requirements point to these specifically or as source control. The U.S. Green Building Council's LEEDv4 for Homes checklist, in its Indoor Environmental Quality section, requires the following as a prerequisite to obtaining points for certification: Ventilation, Radon-Resistant Construction, Air Filtering and Enhanced Ventilation.

We have already addressed radon and RRNC; this section of the catalog covers ventilation, air filtering, and enhanced ventilation through products for:

- Heat/Energy Recovery Ventilation
- Make-up Air
- HEPA Filtration
- Kitchen, Bath, Garage, and Whole House Ventilation
- Duct Boosting

The house graphic below provides an overview of some of the IAQ applications found throughout this catalog.



HRVs & ERVs FOR RADON & IAQ



FEATURES

- Compact design
- Backward-curved blade motors
- Electrostatic filters (washable)
- Aluminum heat recovery core
- External screw-type dry contacts
- Improved core guide channels for easy removal of core

WHY CHOOSE AN HVR / ERV?

By bringing in a continuous supply of fresh air and exhausting contaminated air, HRVs and ERVs can reduce radon levels in homes where Active Soil Depressurization is unlikely to be successful.

TECHNICAL DRAWINGS

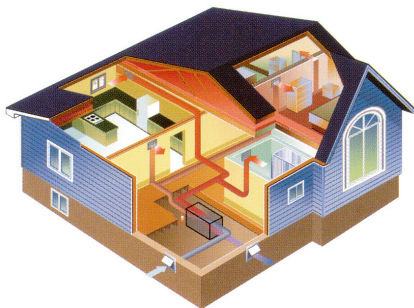


WHICH TO CHOOSE

The climate conditions where you are installing the equipment will determine whether you will need a Heat Recovery Ventilator or an Energy Recovery Ventilator.

HRVs are usually recommended for colder climates with longer heating seasons.

ERVs are used for warmer, more humid climates with long cooling seasons. They use enthalpic cores to transfer both heat and moisture.

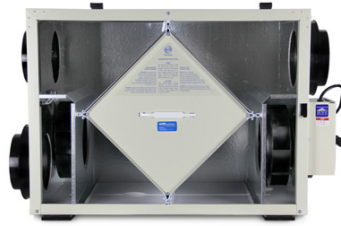


Sizing HRVs & ERVs:

HRVs/ERVs are typically sized to ventilate the whole house at a minimum of 0.35 air changes per hour. To calculate, multiply the square footage of the house (including basement), by the height of the ceiling to get cubic volume. Divide cubic volume by 60 and multiply by 0.35.

Example:	
Sq. Ft. of House	1100
Basement	+1100
Total Sq. Ft.	2200
Height of ceiling	x 8
Cubic volume	17,000
Minutes per hour	: 60
	293
Minimum air changes	x 0.35
Minimum (cfm) airflow required	103

HRVs & ERVs FOR RADON & IAQ



PRICING AND SPECS

TYPE	MODEL	P/N	SIZE	CFM	PRICE
HRV	SHR 1504	28129	Up to 3750 sf	150	
	SHR 2004	28130	Up to 5000 sf	200	
	SHR 1505R ¹	-	Up to 3600 sf	50-149	²
	SHR 2005R ¹	-	Over 5000 sf	60-200	²
	SHR 3005R ¹	-	Over 5000 sf	294	²
ERV	SER1504	-	Up to 3750 sf	150	
	SER 2004	-	Up to 5000 sf	200	

¹ With recirculating defrost, 5-port ² Additional shipping charges. Call for details.

ACCESSORIES FOR HRV/ERV

ITEM	P/N	PRICE
6" Damper	28080-3	
6" Louvered self-dampening vent hood - white plastic w/1" tail rim	76015	
6" Louvered undampened intake/exhaust vent - white plastic w/tail	76023	
6" Aluminum wall cap with damper	76026	
6" x 25' Semi-rigid aluminum flex duct	78019-2	
6" x 25' Foil-laminated flex (UL) duct	78022-2	
6" x 25' Insulated flex duct	78020-2	
6" Metal Y connector	79048	
6" Metal T connector	79046	
6" Metal straight	79047	
6" Metal worm drive clamp	67022-2	
6" Duct grill with metal collar for joist mount	28103	
6" Duct grill with locking ring for ceiling mount	28106	
Condensate trap - 3/4" diameter	79059	



Damper



Louvered self dampening vent hood



Insulated flex duct



Condensate trap



Duct grill with locking ring



MAKE-UP AIR



WHY USE MAKE-UP AIR PRODUCTS?

Use Make-Up Air products to:

- Meet Radon Mitigation Standards
- Avoid possible backdraft problems

The intake hood installs easily through the band joist or foundation wall and connects to ducting using a worm drive clamp. Make-up air can then be routed to the desired location, typically near the furnace.

PRICING & DESCRIPTION

ITEM	P/N	DESCRIPTION	PRICE
Make-Up Air Kit	28079	Intake vent hood with screen; 4" x 25' UL Flexible foil-laminated duct; 4" worm drive clamp	

MAKE-UP AIR PARTS & ACCESSORIES



Intake vent hood with screen



Semi-rigid aluminum duct



UL flexible foil laminated duct



Insulated flexible duct



Flexible white vinyl duct

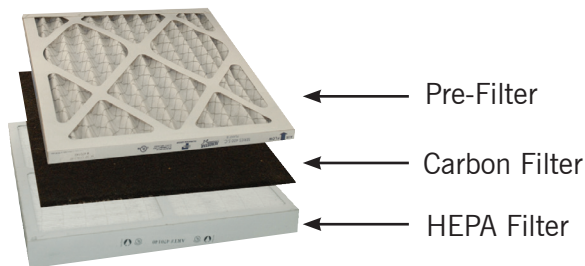


Airlet 200

PRICING & DESCRIPTION

ITEM	P/N	SIZE / DESCRIPTION	PRICE
Intake vent hood with screen	76021	-	
Semi-rigid aluminum duct	78019-3	4" x 8'	
UL flexible foil laminated duct	78022-1	4" x 25'	
Insulated flexible duct	78020-1	4" x 25'	
Flexible white vinyl duct	78018-1	4" x 20'	
	78018-2	4" x 50'	
Worm drive clamp	67022-1	4"	
Airlet 200	76032-1	<ul style="list-style-type: none"> • Allows constant amount of fresh air to enter • Self-regulating damper • Telescoping sleeve accommodates wall thickness 5 3/4" to 8" 	

HEPA FILTRATION



WHY USE HEPA?

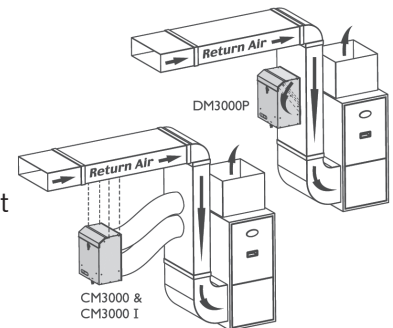
"HEPA Filters are the most efficient mechanical filters for removing small particles which can be breathed deep into the lungs..."
- American Lung Association

FEATURES

- Collects 99.97%* of airborne particles and allergens (*Down to 0.3 microns)
- True HEPA filtration for the entire home
- Installs horizontally or vertically

INSTALLATION

Units easily install horizontally or vertically on the return air side duct of the furnace or air handler. Air is directed through the bypass HEPA, which allows the heating/cooling system to easily deliver clean, fresh, healthy air throughout the entire home. They can also be used as independent systems mounted in the attic, crawl space, or closet.



PRICING & DESCRIPTIONS

ITEM	P/N	DESCRIPTION	DIMENSIONS	CFM	PRICE
DM 3000P	28199	Duct-mounted HEPA unit easily attaches to HVAC plenum; includes pressure switch. Turns on/off with air handler.	21" x 14" x 17"	240	
CM 3000	28197	Collar-mounted HEPA kit includes 2 pieces of 8" flex, 4 collars and hanging chains.	21" x 14" x 17"	240	
CM 3000I	28198	Insulated collar-mounted HEPA with hanging chains	21" x 14" x 17"	240	
RHF16	28201	Replacement HEPA filter	-	-	
RPFH1315	28202	Replacement filter combo pack for HEPA system (1 pre-filter and 1 carbon filter)	-	-	

SPRUCE™ DUCT BOOSTING KITS



DETAILS

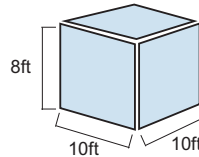
Kits include inline fan, switch, and mounting bracket.

- Interior mount
- Lightweight, durable construction
- Rated for continuous operation

PRICING & DESCRIPTION

ITEM	P/N	FOR USE WITH	DESCRIPTION	CFM		PRICE
				@ 0" WC	@ 0.2" WC	
Spruce SDB110P Kit	28131	4" Duct	Kit Includes: RB110 Inline Fan, Air Pressure-Sensing Switch, Probe and Vinyl tubing	121	100	
Spruce SDB110C Kit	28259	4" Duct	Kit Includes: RB110 Inline Fan and A/C Current-Sensing Switch	121	100	
Spruce SDB350C Kit	28260	4" or 6" Duct	Kit Includes: RB350 Inline Fan and A/C Current-Sensing Switch	334	299	

SPRUCE™ BATHROOM VENTILATION



Sizing Guide For Bathroom: 8 Air Changes/Hour (ACH)
Example: 10' x 10' x 8' ceilings = 800 cu. ft x 8 / 60 = 107 CFM Fan

FAN SPECIFICATIONS & PRICING

MODEL*	P/N	DUCT	WATTS	TYPICAL CFM vs. STATIC PRESSURE							PRICE
				0"	0.2"	0.5"	0.75"	1.0"	1.25"	1.5"	
RV100	28040	4"	35-44	113	100	71	46	18	-	-	
RV125	28042	4"	48-69	115	110	98	87	71	57	43	
RV150	28041	4"	48-66	150	140	119	98	76	50	24	
RV200	28049	6"	49-66	184	170	144	121	87	47	1	
RB110	28128	4"	14-20	121	100	68	20	-	-	-	
RB275	28115	6"	50-75	272	230	176	138	103	57	13	
RB300	28088	6"	66-87	318	270	211	170	135	87	30	
RB350	28261	6"	91-129	334	299	247	210	176	142	116	
RB400	28206	8"	95-152	497	450	353	281	220	176	130	
RB500	28207	10"	99-152	542	500	420	344	275	219	165	

*Fans include mounting bracket.

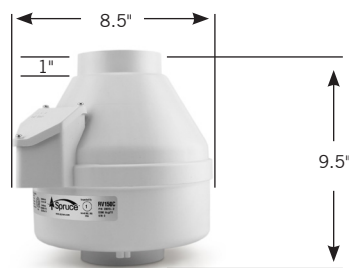


IAQ / VENTILATION

SPRUCE™ RV SERIES - PLASTIC HOUSING

SUITABLE FOR

- Bathroom Ventilation
- Duct Boosting
- Living Area
- Garage Ventilation



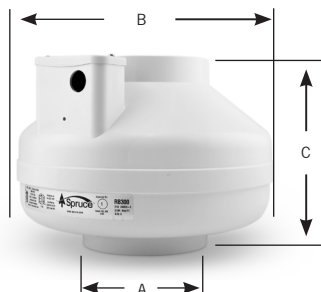
FAN SPECIFICATIONS & PRICING

MODEL*	P/N	DUCT	WATTS	TYPICAL CFM vs. STATIC PRESSURE							PRICE
				0"	0.2"	0.5"	0.75"	1.0"	1.25"	1.5"	
RV100	28040	4"	35-44	113	100	71	46	18	-	-	
RV125	28042	4"	48-68	115	110	98	87	72	57	43	
RV150	28041	4"	48-66	150	140	119	98	76	50	24	
RV200	28049	6"	49-66	184	170	144	121	87	47	1	

*Fans include mounting bracket.



SPRUCE™ RB SERIES - PLASTIC HOUSING



Model	A	B	C
RB110	4"	9.7"	8.5"
RB275	6"	13.4"	9"
RB300	6"	13.4"	9"
RB350	6"	13.4"	9"
RB400	8"	13.4"	10.5"
RB500	10"	13.4"	10.5"

SUITABLE FOR

- Bathroom Ventilation
- Duct Boosting
- Living Area
- Garage Ventilation

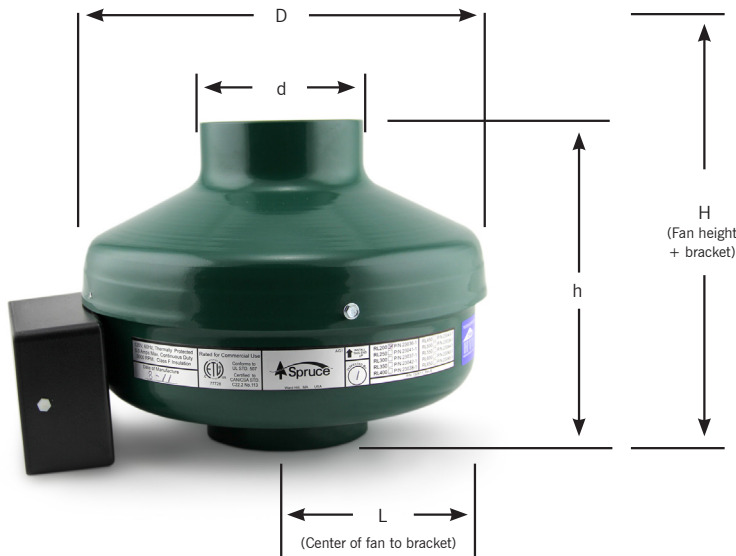
FAN SPECIFICATIONS & PRICING

MODEL*	P/N	DUCT	WATTS	TYPICAL CFM vs. STATIC PRESSURE							PRICE
				0"	0.2"	0.5"	0.75"	1.0"	1.25"	1.5"	
RB110	28128	4"	14-20	121	100	68	20	-	-	-	
RB275	28115	6"	50-75	272	230	176	138	103	57	13	
RB300	28088	6"	66-87	318	270	211	170	135	87	30	
RB350	28261	6"	91-129	334	299	247	210	176	142	116	
RB400	28206	8"	95-152	497	450	353	281	220	176	130	
RB500	28207	10"	99-152	542	500	420	344	275	219	165	

*Fans include mounting bracket.



SPRUCE™ RL SERIES - METAL HOUSINGS



SUITABLE FOR

- Bathroom Ventilation
- Kitchen Ventilation
- Duct Boosting
- Living Area
- Garage Ventilation

Model	H	h	L	D	d
RL200	8.75"	7.38"	4.88"	9.50"	3.88"
RL300	9.38"	7.50"	6.88"	13.50"	5.88"
RL350	9.38"	7.50"	6.88"	13.50"	5.88"
RL450	10.50"	9.13"	6.88"	13.50"	7.88"
RL500	10.50"	9.13"	6.88"	13.50"	9.88"
RL600	N/A	10.00"	8.00"	15.88"	12.38"

FAN SPECIFICATIONS & PRICING

MODEL*	P/N	DUCT	WATTS	TYPICAL CFM vs. STATIC PRESSURE							PRICE
				0"	0.2"	0.5"	0.75"	1.0"	1.25"	1.5"	
RL200	28224	4"	42-62	163	150	123	101	76	54	28	
RL300	28225	6"	53-79	268	240	194	156	117	74	34	
RL350	28226	6"	59-89	300	280	238	201	164	127	89	
RL450	28227	8"	92-152	507	460	371	298	241	193	144	
RL500	28228	10"	97-153	545	500	419	349	275	222	170	
RL600	28126	12"	158-215	670	610	511	419	332	266	210	

*Fans include mounting bracket.

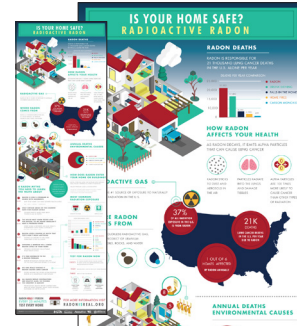


ABOUT SPRUCE VENTILATION



Spruce™ ventilation fans are manufactured by **Spruce Environmental Technologies, Inc.**, an Energy Star® Partner. Spruce is the parent company of **RadonAway®**, which introduced the first inline fan designed and manufactured specifically for radon mitigation; **AccuStar Labs**, which manufactures and analyzes radon test devices in certified laboratories in Medway, MA and Lebanon, PA; and **RCI**, a manufacturer and distributor of radon mitigation products located in Carmel, IN. **Spruce™**, in conjunction with **RadonAway®** and **AccuStar®**, offers a growing selection of highly regarded certification and continuing education training courses for radon professionals (p. 62).

FLYERS & HANDOUTS



PRICING

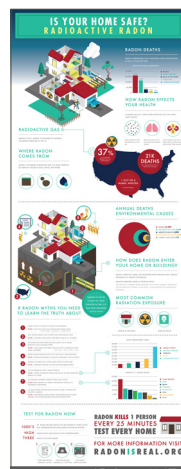
ITEM	P/N	QTY/ PKG	UNIT PRICE			
			< 50	50-950	1000-2950	3000+
EPA: A Citizens Guide to Radon ¹	02007	50	-	\$ 0.29	\$ 0.26	\$ 0.24
EPA: Home Buyers & Sellers Guide to Radon ¹	02006	50	-	0.39	0.34	0.29
SF180 Flyer ²	02022	25	No Charge	-	-	-
GP Series Flyer ²	02002	25	No Charge	-	-	-
XP/XR Series Flyer ²	02003	25	No Charge	-	-	-
RP Series Flyer ²	02008	25	No Charge	-	-	-
Indoor/Outdoor General Installation Flyer ²	02013	25	No Charge	-	-	-
AIRraider™ EZ95 Flyer ²	02023	25	No Charge	-	-	-
AIRraider™ 433-S Series Flyer ²	02024	25	No Charge	-	-	-
AIRraider™ 433 Series Flyer ²	02025	25	No Charge	-	-	-
Radon Is Real Brochure ³	02034	25	No Charge	Inquire ³	Inquire ³	Inquire ³

¹ Order in multiples of 50.

² Order in multiples of 25. Quantities limited to 50 per order. For larger quantities call our Marketing Department.

³ Call Marketing Department to order.

DISPLAY BANNERS & POSTERS



DETAILS

Ready-to-use display banners and posters for home shows, health fairs, and other promotional events. Our exhibit-quality banner displays come with a stand and 26" by 71" banner. The 24" by 36" posters can be mounted for display. Quantities are limited, so please call in advance.

Banners available include:

- Airborne Radon Testing
- Waterborne Radon Testing
- Radon Fans
- Radon Is Real Infographic

Please call our Marketing Department for details or to ask about customized displays.

RADON TRAINING

REGISTER TODAY

Taking our radon training courses is easier than ever! Now you can choose your registration method:

- Go to Radon Training on radonaway.com to download a registration form, or
- Contact us at 800-355-0901 or training@spruce.com



FOR CERTIFICATION AND CONTINUING EDUCATION CREDITS

Classroom Training - In Person or via Live Webinar

Convenient Locations

Do You Want a Class to Come to You? Call for Details.

Regularly scheduled classroom courses include Residential Radon Measurement, Radon Mitigation and Radon in Water. Check our website for dates and locations. Additional and custom courses are available for companies and organizations. Contact us for details & course descriptions.

Online Video Classes

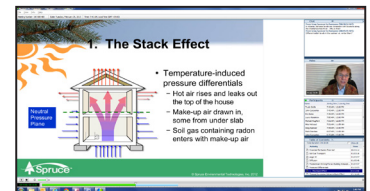
Our Radon Training Video Library offers information mitigators can use today. The continually expanding library includes practical mitigation and business tips. View free (no CE credits) or register for CE credits (\$20/credit hr). Go to radonaway.com for the latest course listings or to register.

Other Online Courses

You can take two of the highly praised courses that have been taught in locations across the country online: QA-QC for Radon Measurement and Marketing the Radon Message.

Home Workshop with Video Introduction

Have you ever seen radon? Build Your Own Radon Cloud Chamber. It's Amazing! Created by Dr. Jim Burkhart of the Western Regional Radon Training Center (WRRTC), this is one of the most popular continuing education courses ever offered at the AARST Radon Symposium. View Dr. Burkhart's introduction free online at radonaway.com, or order the complete home workshop for CE credits.



PRICING & DESCRIPTIONS

TYPE	COURSE	P/N	DESCRIPTION ¹	CE CREDITS	PRICE ²
Classroom	Residential Radon Measurement	-	Certification Prerequisite (accepted in most states) ⁴	16	\$ 299.00
	NEW! LIVE Webinar! ⁴ Residential Radon Measurement	-		16	149.00
	Radon Mitigation	-		24	inquire
	NEW! LIVE Webinar! ⁵ Radon Mitigation	-		24	179.00
	Radon In Water	-	Measurement and mitigation of waterborne radon (accepted in all states)	8	185.00
	Additonal Courses (by request)	-	Descriptions online at radonaway.com	4-8	varies
Online	Online Video Library	-	Practical mitigation and business tips. Descriptions online at radonaway.com	credits vary ¹	VIEW FOR FREE or for CE @ \$20/credit hr
	QA-QC for Radon Measurement	-	Write or improve a QA-QC document	12	120.00
	Marketing the Radon Message	-	Marketing techniques to increase business	4	85.00
Home Workshop	Build a Radon Cloud Chamber	28249	CE Course created by Dr. Jim Burkhart; now includes free online video introduction	4	85.00 ³

¹ See www.radonaway.com/radontraining for full descriptions, including CE credits.

² Discounts available, please inquire.

³ Price does not include \$25 CE Exam Fee and shipping.

⁴ Live Measurement Webinar is not approved for certification in Illinois, New Jersey, and Florida.

⁵ Live Mitigation Webinar is not approved for certification in Ohio, Illinois, New Jersey, and Florida.

ANSI/AARST RRNC 2.0 STANDARD

AARST-ANSI RRNC 2.0, Reducing Radon in New Construction of 1 & 2 Family Dwellings and Townhouses is a “model code” standard for the installation and testing of new construction radon systems. Its purpose is to further radon risk reduction in the U.S. by providing a model building code to achieve indoor radon concentrations of less than 4 pCi/L [148 Bq/m³] in new homes. The standard specifies certain requirements for a radon mitigation system, including fan sizing. The RRNC 2.0 Radon Fan Types chart at right reproduces the specifications in the standard’s Chart 901.3, Fan Sizing. The RadonAway® fans listed in the chart below all meet RRNC 2.0 specifications.

RRNC 2.0 RADON FAN TYPES

PIPE SIZE Nominal (I.D.)	TOTAL FOUNDATION AREA		
	Less than 1600 sq. feet	1600 to 2500 sq. feet	Greater than 2500 sq. feet
	Less than 149 sq. meters	149 to 232 sq. meters	Greater than 232 sq. meters
(3 inch) [7.6 cm]	Use Radon Fan Type: RF1 RF1 Minimum rating:* 50 cfm @ 0.5" WC [85m ³ /hr @ 125 Pa]	Use Radon Fan Type: RF2 RF2 Minimum rating:* 75 cfm @ 1.0" WC [127m ³ /hr @ 250 Pa]	Radon fan to be sized by a certified/licensed radon mitigator.
(4 inch) [10 cm]	Use Radon Fan Type: RF1 RF1 Minimum rating:* 50 cfm @ 0.5" WC [85m ³ /hr @ 125 Pa]	Use Radon Fan Type: RF1 RF1 Minimum rating:* 50 cfm @ 0.5" WC [85m ³ /hr @ 125 Pa]	Radon fan to be sized by a certified/licensed radon mitigator.

To request one complimentary copy of the new standard go to radonaway.com/standard

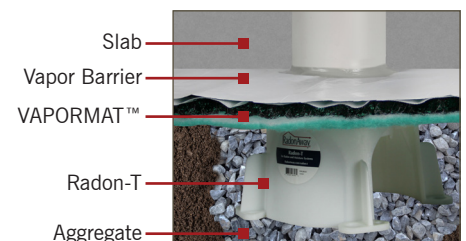
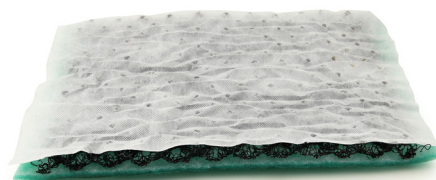
RADONWAY FANS SUITABLE AS DESIGNATED BY RRNC 2.0 STANDARD

MODEL	FAN DUCT DIAMETER	WATTS	MAX. PRESSURE "WC	TYPICAL CFM vs. STATIC PRESSURE WC				RRNC 2.0 Radon Fan Type
				0"	0.5"	1.0"	1.5"	
RP140	4"	15-21	0.8	135	70	-	-	RF1
RP145	4"	41-72	2.1	166	126	82	41	RF1, RF2
RP260	6"	50-75	1.6	272	176	89	13	RF2
XP151	4"	45-60	1.4	150	115	69	-	RF1
XP201	4"	45-66	1.8	112	95	70	40	RF1

VAPORMAT™ FOR RRNC

VAPORMAT Radon & Moisture Mitigation Channeling Systems are ideal for use with new construction radon systems. They can replace perforated piping and/or gravel under radon/vapor barrier, and work particularly well with our Radon-T during new construction. The use of VAPORMAT complies with IRC Appendix F, RRNC 2.0, and ASTM E-1465.

For more details, see p. 17.



PULL-OUT FAN GUIDE

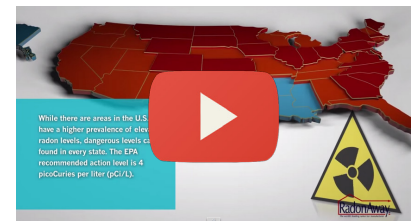
Check out the center of this catalog for our Pull-out Guide. You can have RadonAway® fan specifications and our fan replacement chart at your fingertips - on a job site, in your truck, at your desk, or anywhere else you might want to quickly check for fan specs or replacements. (p. 33-36)



ONLINE TOOLS

- **Radon Informational Video:** RadonAway created a short educational video to provide a tool you can use to educate potential customers and the public on the health hazards of radon and how it can be remediated. It is copyrighted, but is available for download for use by our customers.

radonaway.com/videos



- **Fan Cost Calculator:** RadonAway radon fans cost only pennies a day to operate. Estimate system energy use at radonaway.com/calculator

- **Flexible Coupling Chart:** Coupling sizes are for selection only; actual sizes may vary fractionally. See Flexible Coupling Sizing Chart on p. 16 or at

radonaway.com/coupling

- **RRNC 2.0 Fan Types Chart:** The RRNC 2.0 Radon Fan Types chart reproduces the specifications in the ANSI/AARST standard's Chart 901.3, Fan Sizing. See p. 17 and 63 or request one complimentary copy of the new standard at

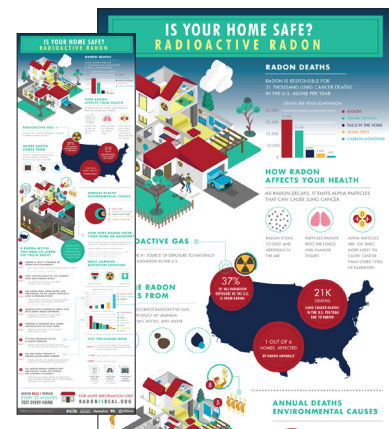
radonaway.com/standard

RADON IS REAL INFOGRAPHIC

In January, for Radon Action Month, we introduced a new website to educate the public about radon and its health risks, and to emphasize the need for testing and mitigation. The website is based on a radon infographic we commissioned for this purpose.

What is an infographic? It's a visual image that can help you simplify a complicated subject or turn an otherwise technical subject into a captivating experience. "A good infographic is worth a thousand words." Radon Is Real brochures are available in this catalog on page 61. Like the Radon Informational Video, the Radon Is Real Infographic is available for download by our customers.

RadonIsReal.org



INDEX

2-Hole Strap.....	39	Fantech HP & FR Fans.....	14	RadonAway® Fan Flyers.....	61
AccuStar Labs.....	18-19	Fire Barriers.....	32	RadonAway® GP Series.....	10-11
Adhesive.....	29	Flanges.....	32	RadonAway® GP500.....	12
Air Flow Indicator.....	20	Flexible Couplings.....	16	RadonAway® HS Series.....	13
AlRaider™ Systems.....	46-52	Flexible Conduit.....	43	RadonAway® Mitigation System Flyer.....	61
Backer Rod.....	22	Flexible Conduit Cutter.....	43	RadonAway® RP Series.....	6-7
Barrier Knife.....	29	Float Switch.....	50	RadonAway® SF180.....	4-5
Bathroom Fans - Inline.....	58	FloodStop.....	50	RadonAway® XP/XR Series.....	8-9
Bladder Tank.....	51	Geocel Urethane Foam.....	22	RadStar GM 1-2.....	21
CE Credits.....	62	GM 1-2.....	21	RadStar RS300.....	19
Charcoal Canister Kit.....	18	Gorilla PVC Cement.....	32	RadStar RS800.....	19
Check Valves.....	26	Goulds Pump & Tank Kit.....	51	Roof Flashings.....	31
Checkpoint IIA & IIR.....	42	GP Series.....	10-11	Roof Vent Caps.....	38
Clack Bypass.....	52	GP500.....	12	Round Backer Rod.....	22
Clamps.....	37	Grundfos Pump.....	51	RP Series.....	6-7
CLEARADON®.....	47	Half Round Backer Rod.....	22	Santa Fe Dehumidifier.....	30
Code Keeper.....	43	HangerLok®.....	37	Saws, Blades.....	44
Condensate Pump.....	25	Hangs Tuff™ J-Style Supports.....	37	Sealants.....	22,29
Condensate Bypasses.....	31	HEPA Filtration Systems / Filters.....	57	Smoke Matches and Pens.....	20
Condensate Trap.....	55	Hole Saws, Bits, Blades.....	44	Solenoid Valve.....	50
Continuous Radon Monitors.....	19	HRVs and Accessories.....	54	Sonin Moisture Meter.....	26
Corentium.....	21	Intake/Exhaust Vent with Screen.....	56	Spruce Inline Fans.....	58-60
Couplings.....	16	J-Style Supports.....	37	STI Smoke Sealant.....	32
Crawlspace Moisture Control.....	27	Kestrel Air Flow Meter.....	20	STI SpecSeal.....	32
Crawlspace Sump Basin.....	25,30	Kitchen Ventilation.....	60	Standard Bits.....	44
Crawlspace Sump Cover.....	24,30	Liquid Scintillation Kit.....	18	Stego® Term Bar.....	29
Dampers.....	32	Magnehelic Manometer.....	41	StegoCrawl®.....	28
Dehumidifiers.....	30	Make-Up Air Accessories.....	56	Sub-Slab Communications Test Kit.....	20
DM1 Micro Manometer.....	20	Makeup Air Inlet.....	56	Sump Basin.....	25,30
Downspout Adapters.....	38	Make-Up Air Kit.....	56	Sump Covers.....	24,30
Dragon Puffer Air Flow Indicator.....	20	Manometers.....	15,41	Sump Donut.....	30
Dranjer Floor Drains.....	23	Marketing Materials.....	61	Sump Pump Accessories.....	20
Dranjer Sump Seals.....	23	Moisture Meter.....	26	Sump Pumps.....	25-26
Duct - Insulated Flexible.....	56	Mufflers.....	38	SUMPRO® Auxiliary Power.....	26
Duct - Semi Rigid Aluminum Duct.....	56	NuFlex Vapor Barrier Sealant.....	22,29	Switches and Covers.....	43
Duct Boosting Fans and Kits.....	58	Outdoor Fan Covers.....	40	System Alarms.....	42
Dura-Skrim.....	28	Pex/Sharkbite Bypass Assembly.....	52	System Labels.....	41
Dynameter™.....	15,41	Pipe Guards.....	38	T Fitting Kit.....	17,30
Electrical Box.....	43	Pipe Hangers.....	37	Tamper Protection Labels.....	18
Electronic Radon Monitors.....	19	Pipe Seals.....	24	Training.....	62
EPA Citizen's Guide to Radon.....	61	Pipe Straps.....	37	Trim Plate.....	32
EPA Home Buyer's and Seller's Guide to Radon.....	61	Pipe Supports.....	37	Uniseal Pipe Seals.....	24
ERVs and Accessories.....	54	Posters.....	61	U-Tube Manometer.....	15,41
Eternabond® & Eternabond® Roller.....	29	Power Cords.....	43	Vapor Barrier/Retarder.....	28
Exhibit Banner Displays.....	61	Pressure Gauges.....	41	Vapor Barrier Sealant.....	22,29
Exterior Switch Kit.....	43	Pressure Switch.....	42	VAPORMAT™.....	17,27,28
Fan Baseplates.....	40	Pro Series 3 Radon Gas Detector.....	42	Vent Caps.....	38
Fan Control.....	43	PVC Cement.....	32	Vulkem Sealant.....	22
Fan Covers.....	40	Radon Gas Detector.....	42	XP/XR Series.....	8-9
Fan Guard Kit.....	40	Radon System Alarms.....	42	Wall Dress Flange.....	32
Fan Replacement Guide (Pull-Out).....	36	Radon System Labels.....	41	Wall Mounting Bracket (Pump).....	50
Fan Selection & Permeability Test Kit.....	20	Radon-T.....	17,30	Water Aeration Systems.....	46-52
Fan Selection Guidelines (Pull-Out).....	33	Radon Test Kits.....	18	Water Hammer Arrester.....	50
Fan Speed Control.....	43	Radon Training.....	62	Water Sensor Alarm.....	26
Fan Switches.....	43	Radon Vapor Retarder.....	28	Well Tank.....	51
Fan System Flyers.....	61	RadonAway® Air Flow Alarm.....	42		
		RadonAway® PGS Sealant.....	22		

CONDITIONS OF SALE

All sales prepaid unless credit is pre-approved. Credit terms are net 15 days. RadonAway® reserves the right to revoke credit at any time. Past due balances are subject to a 1.5% per month late charge.

Shipping and handling charges are additional. Drop-ship orders to locations other than RadonAway® customers' business location(s) are subject to an additional \$15 handling charge.

All prices and conditions are subject to change without notice.

Prior to any return, you must call RadonAway® for an RMA number. Returned items must be in resaleable condition in original packaging. All returns for credit must be made within 30 days of purchase. There will be a 20% restocking charge for return of non-defective merchandise. Shipping and handling charges are not refundable on returns.

Send returns to: RadonAway®, 3 Saber Way, Ward Hill, Massachusetts 01835, not to our post office box.

With respect to goods manufactured and sold by Seller, such goods sold hereunder are warranted to be free from defects in material and workmanship. Seller will repair or replace, without charge, any goods proven defective. With respect to goods distributed by Seller, but not manufactured by Seller, the Seller will accept returns on all such goods for a period of thirty (30) days from the date of sale. Thereafter, all such goods must be returned to the manufacturer of the goods by the buyer, under the specific terms of the manufacturer's warranty unless the manufacturer has designated the Seller as an agent of the manufacturer for warranty purposes.

EXCEPT AS STATED ABOVE, THE GOODS ARE PROVIDED WITHOUT WARRANTY OF ANY KIND, EITHER EXPRESS OR IMPLIED, INCLUDING, WITHOUT LIMITATION, IMPLIED WARRANTIES OF MERCHANTABILITY AND FITNESS FOR A PARTICULAR PURPOSE. THE SELLER'S AGGREGATE LIABILITY SHALL NOT IN ANY EVENT EXCEED THE AMOUNT OF THE PURCHASE PRICE OF SAID GOODS. THE SOLE AND EXCLUSIVE REMEDY UNDER THE SELLER WARRANTY SHALL BE THE REPAIR OR REPLACEMENT OF THE GOODS, TO THE EXTENT THE SAME DOES NOT MEET WITH SELLER'S WARRANTY AS PROVIDED ABOVE.



All RadonAway® radon fans, AIRaider™, AccuStar® and CLEARADON® products, and Spruce™ fans are made in USA with US and imported parts. The flag symbol confirms our commitment to providing the best products at a reasonable cost.

Business Hours:

Monday through Friday, 8:00 AM to 5:00 PM ET
Closed weekends and the following holidays in 2015:
Memorial Day (May 25), Independence Day (July 4), Labor Day (Sept. 7),
Thanksgiving (Nov. 26 & 27), Christmas (Dec. 24 & 25)

After business hours, on weekends and holidays:

Order online, or by phone or fax your order for processing on the next business day.

Shop online 24/7 at radonaway.com. (Orders will be processed next business day.)

Orders:

Phone: 800-767-3703 • Fax: 978-521-3964

Same Day Shipping for Most Orders Received by 4PM ET*

1-Day and 2-Day Delivery to Most of the US

Shipped from:**

MA • PA • CO • IN



VISA, MasterCard, American Express and Discover Accepted

* Non-stocked products and large orders will require additional time before shipment.

**Call for specific shipping details.

This catalog has been reviewed for content and accuracy. RadonAway is not responsible for errors and/or omissions that might occur inadvertently during the production and printing process.

Now Available! Shop Online at RadonAway.com



ONLINE CUSTOMER PORTAL FEATURES: OVERVIEW

More and more RadonAway customers are discovering the convenience and usefulness of our online customer portal on radonaway.com. This customer portal provides customers with all the basic features of an e-commerce website.



View all of your current invoices and order history online whether you submitted the orders online or via phone.



For repeat product orders use Easy One-Click Re-Order.



Submit orders 24-7.



Track UPS shipments that come from our Ward Hill location.



Take advantage of exclusive periodic online promotions.

IMPORTANT INFORMATION: HOW TO GET STARTED

How to Access RadonAway's Customer Portal:

Are you ready to start using the Customer Portal? To get your login for the e-commerce portal, please complete the appropriate form on the web pages below:

Existing RadonAway Customers: radonaway.com/login

New RadonAway Customers: radonaway.com/reg

Please note that filling in the wrong form may delay the account set-up process.



3 Saber Way
Ward Hill, MA 01835

Shipping available from
MA, PA, IN & CO

Call for specific shipping details.



2015-2016 NEW PRODUCTS



ALARMS & MONITORS P. 42

RadonAway® Air Flow Alarm: Advanced technology in a compact design, RadonAway's Air Flow Alarm alerts users via sound and light to a low air flow condition in system piping.



RADON TESTING & DIAGNOSTICS P. 21

Corentium Digital Radon Monitor: A handheld, battery-operated, state-of-the-art digital radon monitor, the Corentium is ideal for use by professionals as a radon diagnostic aid.



VAPOR BARRIERS & ACCESSORIES P. 27-28

VAPORMAT™ Channeling Systems: Not another vapor barrier, VAPORMAT provides increased air flow and can replace perforated pipe and gravel in new construction and crawlspace ASD radon, moisture and VOC systems.



PIPE ACCESSORIES P. 37

HangerLok®: Exclusively designed to our specifications and available to the radon industry only from RadonAway, these easy-to-use, corrosion-resistant, UV stable, white, one-piece, automatic-locking pipe hangers match white PVC Schedule 40 system pipe.



RADON IN WATER REMOVAL P. 47

CLEARADON® 3311: Now owned and manufactured by RadonAway, the Clearadon adds a new aeration process and dimension to our existing line of industry-leading AIRaider™ aeration systems.



SERVICE



QUALITY



INNOVATION

2015/2016 PRODUCT CATALOG
800-767-3703 RadonAway.com