

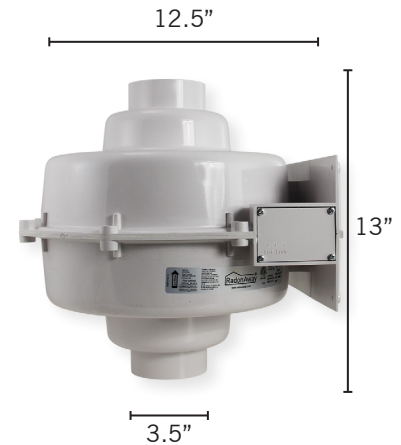
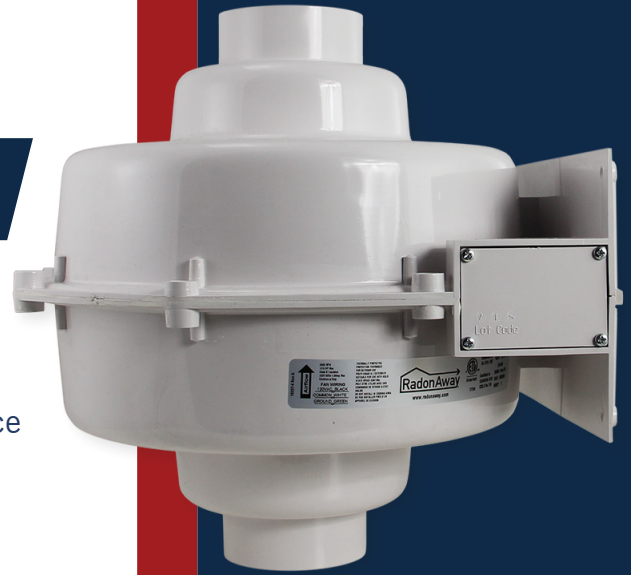
INSTALLS WHITE, STAYS WHITE

Radon Mitigation Fan

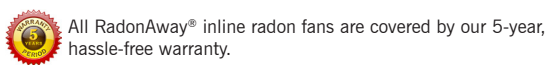
All RadonAway® fans are specifically designed for radon mitigation. GP Series Fans offer a wide range of performance options that make them ideal for most sub-slab radon mitigation systems.

Features

- NEW Stay-White™ housing
- Quiet operation
- Water-hardened motor
- Seams sealed under negative pressure (to inhibit radon leakage)
- Mounts on duct pipe or with integral flange
- 3" diameter ducts for use with 3" or 4" pipe
- Electrical box for hard wire or plug in
- ETL Listed - for indoor or outdoor use
- 4 interchangeable GP models



MODEL	P/N	FAN DUCT DIAMETER	WATTS	RECOM. MAX. OP. PRESSURE "WC	TYPICAL CFM vs. STATIC PRESSURE WC						
					1.0"	1.5"	2.0"	2.5"	3.0"	3.5"	4.0"
GP201	28465	3"	31-65	1.8	54	42	11	-	-	-	-
GP301	28466	3"	56-100	2.3	64	54	41	4	-	-	-
GP401	28467	3"	62-128	3.0	-	61	52	44	22	-	-
GP501	28468	3"	68-146	3.8	-	-	66	58	50	27	4



For Further Information, Contact Your Radon Professional: