



# AWD SITEDRAIN™

## AMERICAN WICK DRAIN SITEDRAIN™ FOR RADON, MOISTURE AND VOC REDUCTION

American Wick Drain (AWD) SiteDrain Strip products are composed of a dimpled polymeric perforated core fully wrapped in a nonwoven geotextile and are comprised of 84% air space. These products provide a value engineered alternative to perforated pipe and aggregate subsurface materials. Best for projects where a high compression strength product is required.

### FEATURES

- ✓ Saves time & money
- ✓ Easy to install
- ✓ Fully wrapped polymeric core resistant to most chemicals
- ✓ Best for projects where high compression strength is required
- ✓ Complies w/RRNC 2.0 & IRC Appendix F
- ✓ Complies w/ANSI-AARST CC-1000 Standard



AWD SITEDRAIN  
6000 SERIES  
P/N 28636, 28637

PROPERTY	AWD SiteDrain 6412 (P/N 28636)	AWD SiteDrain 6418 (P/N 28637)	AWD SiteDrain 9412 (P/N 28634)	AWD SiteDrain 9418 (P/N 28635)
X-Sect. Area	10.08	15.2	10.08	15.2
Thickness (Inches)	1	1	1	1
Width (Inches)	12	18	12	18
Roll Length (Feet)	150	150	150	150
Core Temp (Low/Melting Point)	20 F/200 F	20 F/200 F	20 F/200 F	20 F/200 F
Compressive Strength*	6000 PSF @ 7% Compress.	6000 PSF @ 7% Compress.	9500 PSF @ 7% Compress.	9500 PSF @ 7% Compress.
Determined Flow Rate**	21 GPM / Ft.	21 GPM / Ft.	21 GPM / Ft.	21 GPM / Ft.
Rolls Per Pallet	12" = 7 Rolls per Pallet	18" = 5 Rolls per Pallet	12" = 7 Rolls per Pallet	18" = 5 Rolls per Pallet

\*Maximum PSF rating where product is equivalent or greater than a cross-sectional area for a 3" (6412 / 9412) or 4" (6418 / 9418) pipe per RRNC and CC-1000.

\*\*@ 3600 PSF and 0.01 Gradient (ASTM D4491)

PSF: Pounds per Square Foot

For Further Information, Contact [sales@radonaway.com](mailto:sales@radonaway.com)



# AWD SITEDRAIN APPLICATION

AWD SiteDrain Strip can be used where a pressure field is required across obstacles or over distances; in conjunction with sand and/or gravel; or in place of perforated piping for negative pressure field extension under a concrete slab or radon vapor barrier.



## BENEFITS/ADDITIONAL FEATURES

- ✔ Reduces radon, moisture and other toxic vapor levels in home, commercial or industrial buildings.\*
- ✔ Reduces the potential for mold and mildew problems.\*
- ✔ Maintains air flow communication across grade beams, downturns, footers and distant corners.\*
- ✔ Reduces the need for an exhaust fan or basement dehumidifier reducing lifetime energy costs.\*
- ✔ Manufactured in USA.
- ✔ Shortens concrete slab cure time significantly.\*
- ✔ When used with Geo-Outlet (see “Accessories”), provides a more cost-effective solution vs. pipe fittings.
- ✔ When pouring slabs in existing dirt floor basements or crawlspaces, the low profile of the AWD SiteDrain Strip allows for less excavation when compared to placing perforated pipe in gravel.\*

\*When used in conjunction with an active fan.

## APPLICATION

PRODUCT	SUBSLAB & CRAWLSPACE APPLICATIONS UP TO 6000 PSF	SUBSLAB & CRAWLSPACE APPLICATIONS UP TO 9500 PSF	REPLACEMENT FOR PIPE EQUIVALENT	IRC APPENDIX F & CC-1000 COMPLIANT	COUNTRY OF MANUFACTURE**
AWD SITEDRAIN 6412	X		3"	X	USA
AWD SITEDRAIN 6418	X		4"	X	USA
AWD SITEDRAIN 9412*		X	3"	X	USA
AWD SITEDRAIN 9418*		X	4"	X	USA

\*Drop Ship Only

\*\* Made in US with US and imported materials

PSF: Pounds Per Square Foot

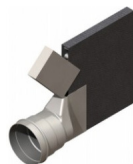
## ACCESSORIES & RELATED PRODUCTS



RadonAway Hybrid Sealant  
P/N 28523



Geo-Outlet  
P/N 28640



End Outlet  
P/N 28638, 28639



SGM Connector Elbow  
P/N 28642



Fitting & Joint Tape  
P/N 28641



Anchoring Staples  
P/N 66240  
11 Gauge, 8"x1"