

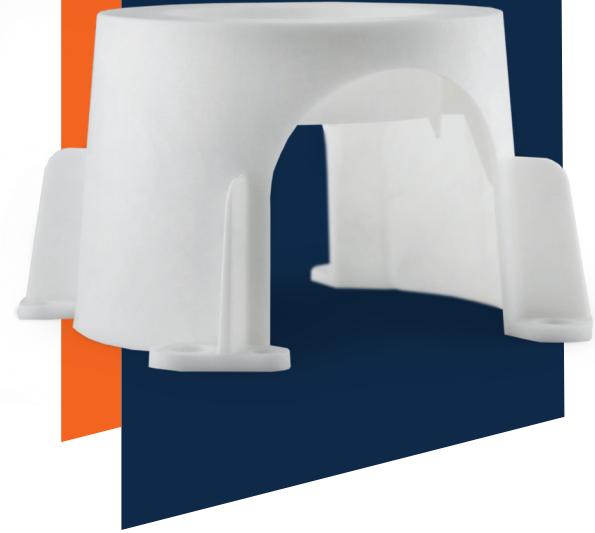
# RADON-T

## THE BEST FITTING FOR RRNC & CRAWLSPACES

Specifically engineered as the starting point for new construction and crawlspace radon systems, the RadonAway Radon-T is designed to help meet ENERGY STAR® IAP, NAHB, LEED-H, AARST/ANSI and other RRNC and Green Building requirements.

## RADON-T FEATURES

- Easily saddles over drainage piping.
- Stands flat and can be staked in place for stability.
- Works with aggregate or geotextile matting (including RadonAway's VAPORMAT™).
- Provides 4-way air flow with side knockouts, allowing moisture and soil gases to be drawn from all angles.
- Accepts 4" schedule 40 into socket.



## THE RADON-T KIT INCLUDES

- Radon-T  
To prepare for installation of an active or passive radon, soil gas and moisture control system.
- 4 Stakes  
To stabilize the T in preparation for aggregate fill and slab pour.
- Vent Pipe Cap  
To prevent debris entry and, because it is clearly labeled, avoid the possibility of mistaking the vent pipe stub for a utility pipe "rough in".
- Instruction Guide  
Providing installation and use instructions for Radon-T as well as full RRNC system installation instructions (to assist compliance with standards including AARST/ANSI CCAH-2012, AARST/ANSI CC-1000-2017, ICC/ASHRAE 700-2015, ASTM E1465, IRC Appendix F and state and local codes).

Installation video available at [radonaway.com/radon-t](http://radonaway.com/radon-t)